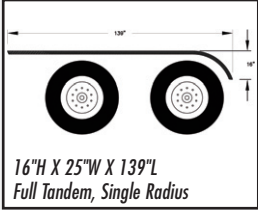
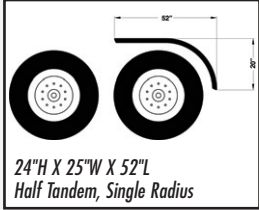
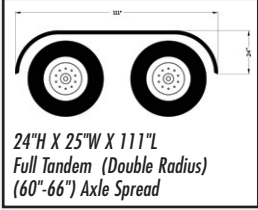
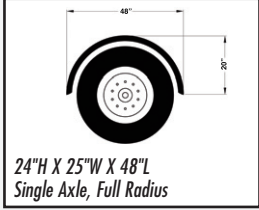
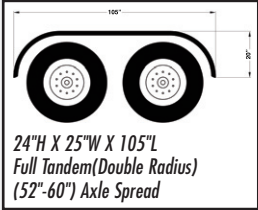
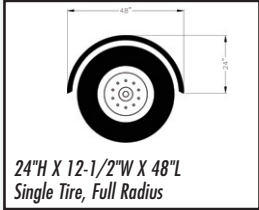
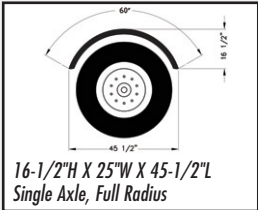
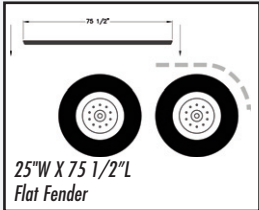
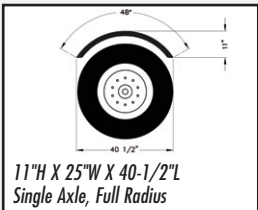


# ROLLED FENDERS

## ORDER INFORMATION

Order #	Description	Wt.	Order #	Description	Wt.
	5001 .090 Smooth Alum. W/ Ribs 35.4 5011 .090 Smooth Alum. 34.0 5021 .100 Diamond Plate Alum. 42.9 5031 .125 Smooth Alum. 47.1 5041 16 Gauge "Bright" S. S. 67.4			5000 .090 Smooth Alum. W/Ribs 15.6 5010 .090 Smooth Alum. 15.1 5020 .100 Diamond Plate Alum. 18.1 5030 .125 Smooth Alum. 21.0 5040 16 Gauge "Bright" S. S. 30.4	
	5002 .090 Smooth Alum. W/Ribs 33.0 5012 .090 Smooth Alum. 31.9 5022 .100 Diamond Plate Alum. 38.3 5032 .125 Smooth Alum. 44.2 5042 16 Gauge "Bright" S. S. 64.1			5004 .090 Smooth Alum. W/Ribs 18.3 5014 .090 Smooth Alum. 17.6 5024 .100 Diamond Plate Alum. 22.0 5034 .125 Smooth Alum. 24.3 5044 16 Gauge "Bright" S. S. 34.8	
	5003 .090 Smooth Alum. W/Ribs 32.2 5013 .090 Smooth Alum. 30.9 5023 .100 Diamond Plate Alum. 38.9 5033 .125 Smooth Alum. 42.7 5043 16 Gauge "Bright" S. S. 61.2			5005 .090 Smooth Alum. w/ Ribs 9.2	
	5037 .090 Smooth Alum. 14.0			5025 .090 Smooth Alum. with Ribs 18 5026 .090 Smooth Alum. 17.4 5027 .100 Diamond Plate Alum. 20.9 5028 .125 Smooth Alum. 24.1 5029 16 Gauge "Bright" S. S. 34.9	
	5035 .090 Smooth Alum. 11.1 5036 .125 Smooth Alum. 13.0				

**FENDERS SOLD AS SINGLE UNITS, ORDER TWO FOR A SET.** Fenders must be installed with Merritt brackets for warranty consideration.

**CAUTION** Fenders are not to be used as steps or load bearing surfaces. Note: Modifications of the fenders are at the discretion, responsibility, and risk of the installer.

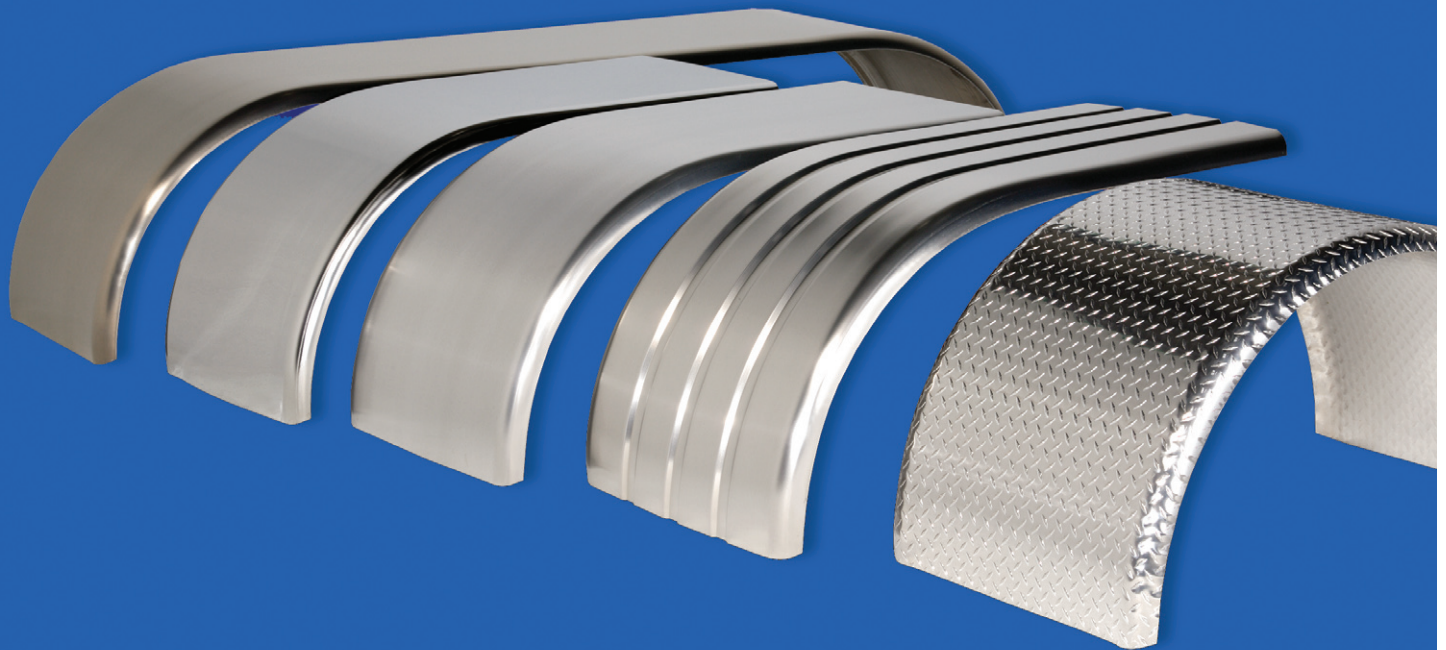
Models and/or Specifications Subject to Change Without Notice.

F.O.B. - Atlanta GA, Birmingham AL, Dallas TX, Henderson CO, Houston TX, Minneapolis MN, Nashville TN, Pittsburgh PA, Portland OR, Sacramento CA, Kansas City KS, Calgary, AB (CA), Toronto, ON (CA)



- ▲ Thirty-six models of fenders to fit most applications.
- ▲ Twelve different designs to cover your various needs.
- ▲ Stocked in most Merritt warehouse locations.
- ▲ Different styles and materials to choose from, allowing you to pick the "look" you want.
- ▲ Aluminum available in .090, .100DP or .125 thickness.
- ▲ 304 16ga stainless steel, #8 polish for strength and bright finish.
- ▲ Design a mounting style that will work for your truck.
- ▲ Custom lengths are available.
- ▲ Use the E-Z Mount Fender Bracket to install.

## ALUMINUM & STAINLESS FENDERS



Rolled Fenders