

**Legendary Toughness
for Your Heavy Duty Truck**

[illegible]



ABOUT US



WELCOME TO MERRITT

Merritt Aluminum Products Company is North America's leading manufacturer of aluminum accessories serving the heavy duty and light truck transportation industry. As a family-owned company with over 70 years of manufacturing experience, Merritt takes pride in producing and distributing highly desired and premium products that keep our drivers moving. We develop strong partnerships with our North American distribution partners through our excellent services, best-in-class lead times, in-house sales and customer service team, on-site engineering, and our own warehouse distribution channel.

Built into each Merritt product is legendary toughness - Merritt products are designed with durability for your working truck, yet premium enough for your show truck! Merritt Aluminum Products Company strives to be the easiest manufacturing company in the industry for you to work with. We are highly focused on continuous improvement and customer service.

Our core purpose is to build a great company, with great people, and great results while helping those we serve succeed through high quality, high performance products and services. Our people and values make the difference through INTEGRITY, TRUST, EXCELLENCE, RESPECT and TEAMWORK.

We are excited to build a partnership with you and help you grow your operation. Please contact us with any questions or comments, and THANK YOU for being interested in Merritt Aluminum Products.



Merritt Cab Rack



Deluxe Option
Package 328



Diamond Back



Smooth Panel

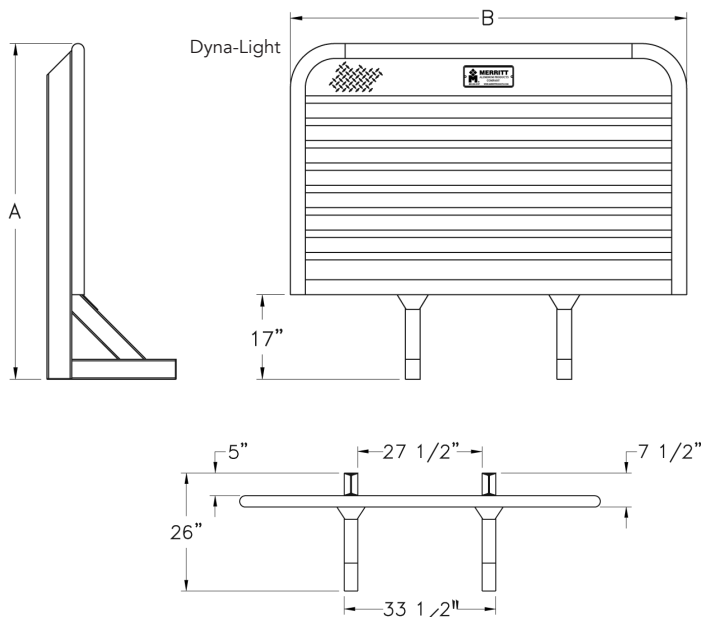
- Dyna-Tube extrusion, aerodynamic radius corner shape, for low weight.
- Offset design available to accommodate the new style exhaust systems.
- 4 inch tall, foot assembly, provides increased trailer clearance for easier mounting and durability.
- New T-Beam extrusion allows Merritt to decrease T-beam profile by one inch, allowing for greater swing room clearance.
- Seven mounting kits available.
- Great for storage. One door, two door and full three door enclosures are available.
- Internal shelves and chain hangers are popular options that keep your storage items out of the weather and out of sight.
- Custom configurations available upon request.



Steps to Ordering Your Cab Rack

- STEP 1:** Choose the **Model Base Unit** that fits your truck.
Height & Width of Cab.
- STEP 2:** Choose **Window or No Window**
- STEP 3:** Pick **Options:** Chain Racks, Enclosures, etc.
- STEP 4:** Call the **Merritt Customer Service Team** to place final order - 800.525.0107

Cab Rack Measurements



- Must be Installed to Merritt Specifications with a Merritt Mounting Kit.
- Mounting Kits not Included. Reference Mounting Kit - Page 7.

Cab Rack Base Unit

DIAMOND PLATE	PART NO.	A	B	WT.
Dyna-Light - Radius Corner	317	68"	70"	122
Dyna-Light - Radius Corner	318	68"	76"	125
Dyna-Light - Radius Corner	319	68"	86"	130
Dyna-Light - Radius Corner	320	68"	80"	128
Dyna-Light - Mack CH Series	321	73"	78"	133
Dyna-Light - Radius Corner	322	75"	86"	140
Dyna-Light - Tall Cab App	3750	80"	76"	176
Diamondback - 45" Corner	370	68"	70"	122
Diamondback - 45" Corner	371	68"	86"	130
Dyna-Light - Offset	3172	68"	61"	115
Dyna-Light - Offset	3182	68"	64"	117
Dyna-Light - Offset	3192	68"	69"	120
Dyna-Light - Offset	3202	68"	66"	118
Dyna-Light - Offset	3212	73"	68"	126
Dyna-Light - Offset	3222	75"	69"	133
SMOOTH PANEL	PART NO.	A	B	WT.
Dyna-Light - Radius Corner	3173	68"	70"	122
Dyna-Light - Radius Corner	3183	68"	76"	125
Dyna-Light - Radius Corner	3193	68"	86"	130
Dyna-Light - Radius Corner	3203	68"	80"	128
Dyna-Light - Mack CH Series	3213	73"	78"	133
Dyna-Light - Radius Corner	3223	75"	86"	140

Models and/or Specifications Subject to Change Without Notice.
F.O.B. - Fort Lupton CO, Sacramento CA, Dallas TX, Columbus OH, Calgary AB (Canada)

This cab rack is NOT A SAFETY DEVICE and will NOT PREVENT SERIOUS INJURY or DEATH from forward shifting cargo as a result of an accident or improper securement.

To prevent SERIOUS INJURY or DEATH:

- ALWAYS secure your cargo in compliance with FMCSA/DOT regulations. See 49 CFR 393 for specific requirements. Be aware of any applicable state motor carrier regulations.
- NEVER consider this cab rack to be part of your cargo securement system. It is not a substitute for any cargo securement device and does not change any of the cargo securement requirements.
- NEVER haul a log trailer or a pole trailer with this cab rack installed. It is a misuse of the cab rack and is strictly prohibited by Merritt Aluminum Products Company.
- NEVER allow cargo to contact cab rack or use cab rack as a tie down point.
- INSPECT cab rack weekly for cracks or damage. If damaged, replace cab rack.
- CHECK torque of all bolts every 90 days. Bolts on Moon Brackets 150ft.-lbs. dry.
- Use cab rack for storing chains and equipment. For more information, visit www.merrittproducts.com
- ONLY use a Merritt Mounting Kit. If a Merritt Mounting Kit is not used to install a Merritt cab rack, then your cab rack warranty will be void.

WARNING:

NEVER reuse a mounting kit. ALWAYS read and follow the Merritt Mounting Kit Assembly Instructions to ensure proper installation.
If you do not have the proper equipment or skill to install the cab rack, take your vehicle to an authorized dealer.





SELECT CAB RACK OPTIONS



OPTION #328: Deluxe Kit - Full Tray,
2 Locking Chain Racks



OPTION #363: Deluxe Kit - 24" or 18"
Trays, 2 Locking Chain Racks



OPTION #147: Locking Chain Rack Cover
OPTION #1471: Locking Chain with Steel
Insert



OPTION #373: Center Enclosure - 44x10x26
OPTION #375: Center Enclosure - 44x18x27



OPTION #381: Side Enclosure - 11" Deep
Not Available for BASE #317.



OPTION #340: 2 & 3 Door Enclosures
14" outer dim. x 11" inner dim.
2 Door: Works with **BASE #317**
3 Door: Works with **BASE #318, 319, 320,**
321, 322



OPTION #390: 3 Door Deep Drop Enclosure
14" outer dim. x 11" inner dim.
Works with **BASE #319, 320, 321, 322**
OPTION #3905: Smooth Door Enclosure



OPTION #3400: Full 2 & 3 Door Enclosures,
Polished Aluminum
14" outer dim. x 11" inner dim.
OPTION #3401: Full 2 & 3 Door Enclosures,
Stainless steel
OPTION #3405: Smooth Door Enclosure



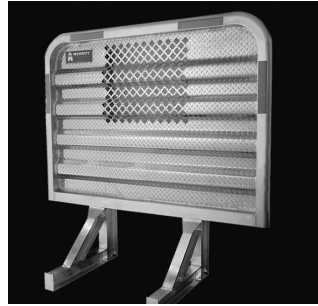
OPTION #3402: Jail Bar 3 Door Enclosure
14" outer dim. x 11" inner dim.
OPTION #3406: Smooth Door Enclosure



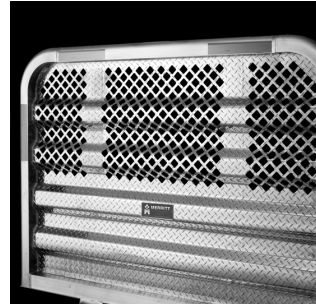
Models and/or Specifications Subject to Change Without Notice.



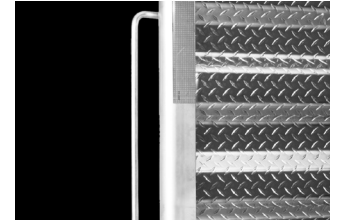
OPTION #367: Jail Bar Window
27" W x 23" H



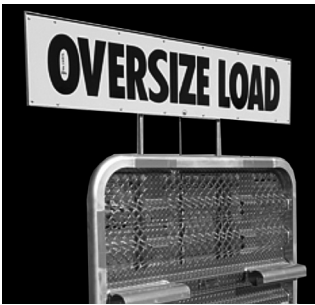
OPTION #369: E-Z View Window
26-5/8" W x 22-3/16" H



OPTION #386: E-Z View
Full Window



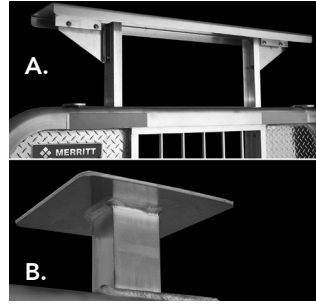
OPTION #142: Grab Handle - 25"



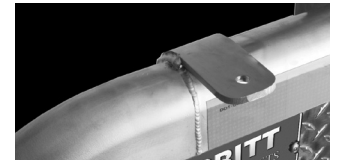
OPTION #3430: Wide Load Sign,
Air Operated



OPTION #141-1: Top Mount Light
Bar, 14" Pad



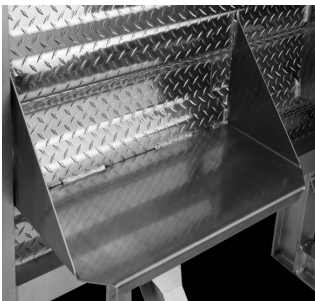
A. OPTION #141-2: Top Mount
Light Bar, 51.5" Pad
B. OPTION #393: Beacon Bracket,
Fixed



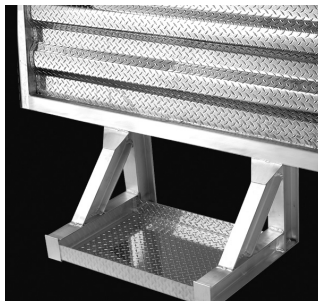
OPTION #144: Bracket, Load Light



OPTION #4212: Stop & Turn
Light Bracket



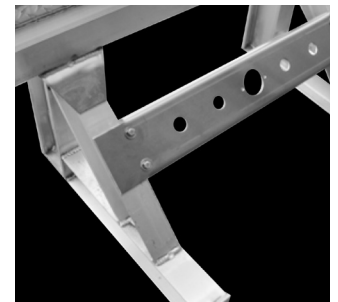
OPTION #336: Tray Panel
Mount, 11-1/2" H x 26" W



OPTION #337: Base Tray
30" W x 20-3/4" D



PART #230: Tuck-Away Box
20" H x 24" D x 24" W
Sold Separately



OPTION #4870: Between the
Foot Bracket With Holes,
33" W x 7" H

OPTION #4871: Between the
Foot Bracket Without Holes,
33" W x 7" H

Additional Options for Cab Racks

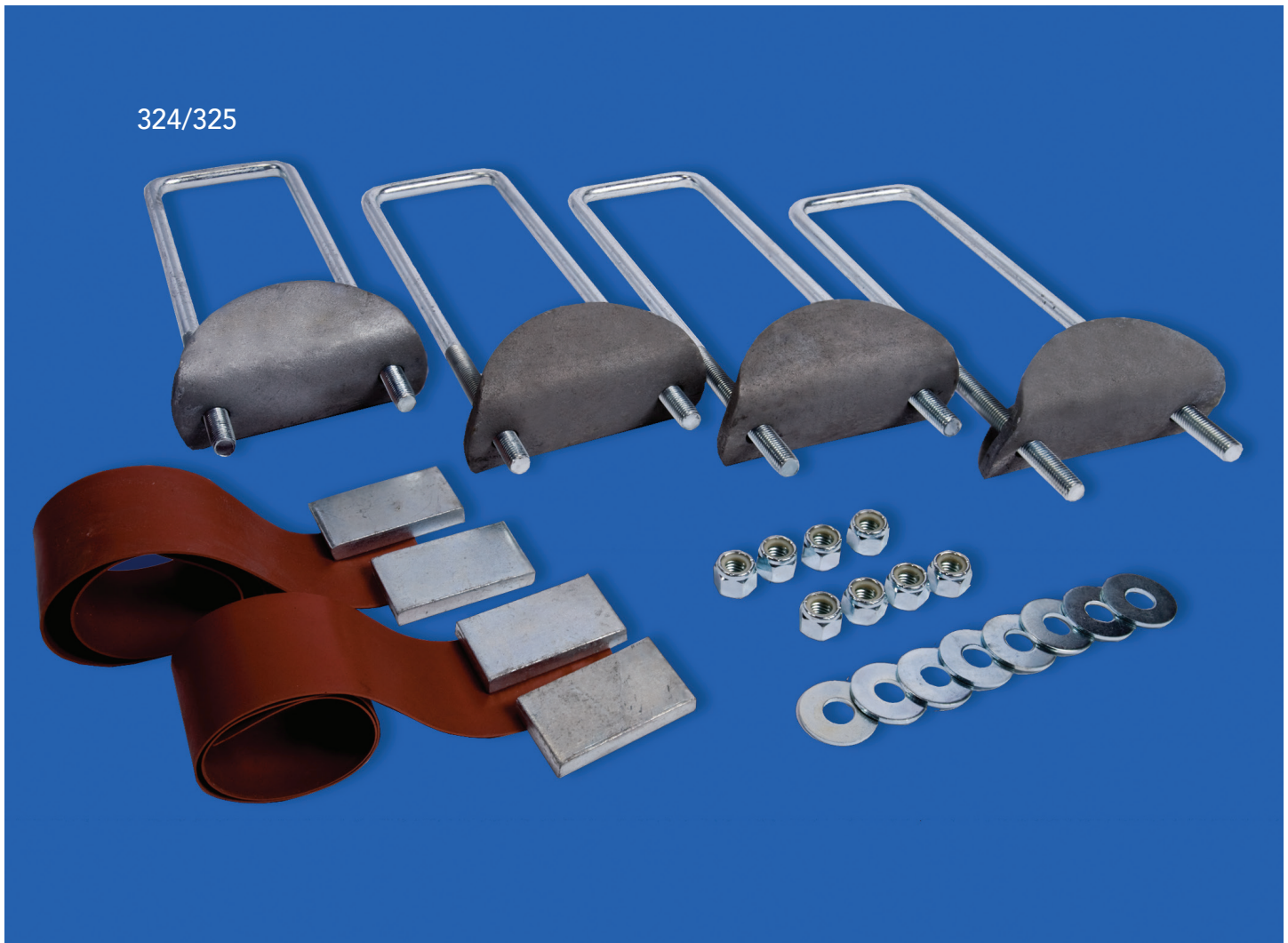
DESCRIPTION	OPTION #
Chain Rack w/o Locking Cover	128
Chain Rack w/o Lid, Flat Surface Mount	128-1
24" Wide Tray, 11.25"H x 8.5"D	333
18" Wide Tray, 11.25"H x 8.5"D	333-18
Full Width Tray, 11.25"H x 8.5"D	329
Lid Assembly for 24" Tray	334
Lid Assembly, Full Tray	331
Top Mount Tarp Tray	335

DESCRIPTION	OPTION #
Hose Hanger Assembly	392
Enclosure Shelf	341
Beacon Bracket, Sliding	413
Shelf Center Enclosure, 9" D	377
Shelf Center Enclosure, 18" D	378
Chain Rack, Single	380
Retainer, Chain Center Enclosure	379
Tire Carrier	163

Call Customer Service for Additional Options.



Accommodates Frame Rail Mounting



- 7 models to choose from, to allow you flexibility for your needs.
- Metal surfaces are Zinc plated for durability and appearance.
- Dyna-Clamps can be mounted with u-bolt up or down position.
- Deluxe kit and Problem Solver kits for the times when items block the frame rail and a clamp will not work. (Drilling required & nuts/bolts/washers not included for the side bracket)
- Stress blocks are included to fit between the u-bolt and the CR leg. This spreads the clamping force over a larger area.

Models and/or Specifications Subject to Change Without Notice.

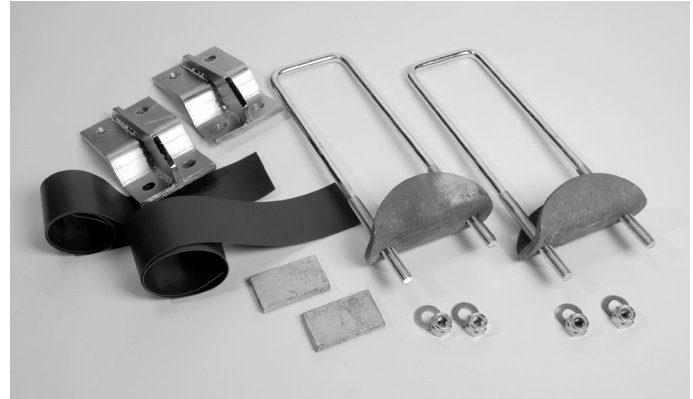
OPTIONS – MOUNTING KITS



Dyna-Clamp Kits*

DESCRIPTION	OPTION #
Dyna-Clamp Kit (17" U-bolts) For Frame Rails 11" Deep or Less	324
Dyna-Clamp Kit (21" U-bolts) For Frame Rails Over 11"	325

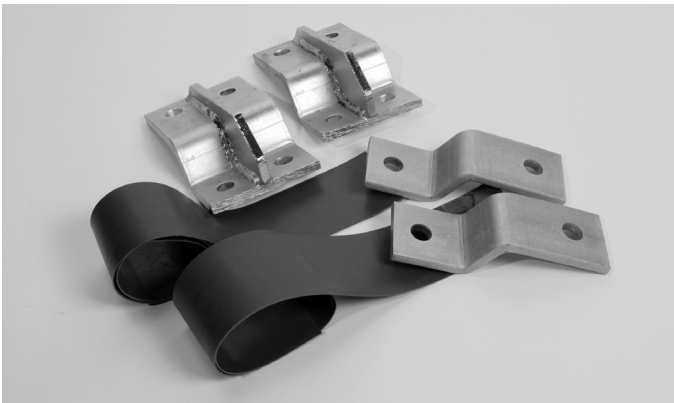
Most popular kits. Designed for most installation needs.



Deluxe Kits*

DESCRIPTION	OPTION #
Deluxe Mounting Kit (17" LI-bolts) For Frame Rails 11" Deep or Less	326
Deluxe Mounting Kit (21" LI-bolts) For Frame Rails Over 11"	327

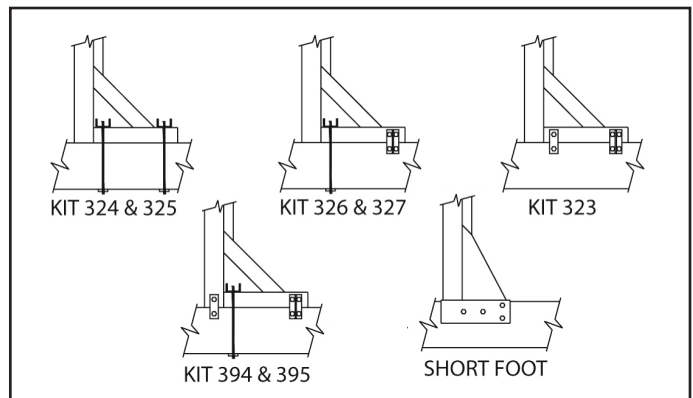
Designed to give an extra option for problem installations. Two Brackets and Two U-Bolts.



Problem Solver*

DESCRIPTION	OPTION #
Problem Solver Kit (nuts and bolts not included)	323

Designed for difficult installations in and around air tanks, hanger brackets, cross-members, fuel tanks, etc.



3-Point Mounting Kit*

DESCRIPTION	OPTION #
3-Point Mounting Kit (17" LI-bolts) For Frame Rails 11" Deep or Less	394
3-Point Mounting Kit (21" LI-bolts) For Frame Rails Over 11"	395

Four Brackets and Two U Bolts .

*All parts zinc coated for corrosion resistance.

Call the Merritt Customer Service Team with questions & clarification. 800.525.0107



Merritt Cab Racks are NOT to be used in conjunction with log trailers or pole trailers.



Models and/or Specifications Subject to Change Without Notice.



Short Foot Options



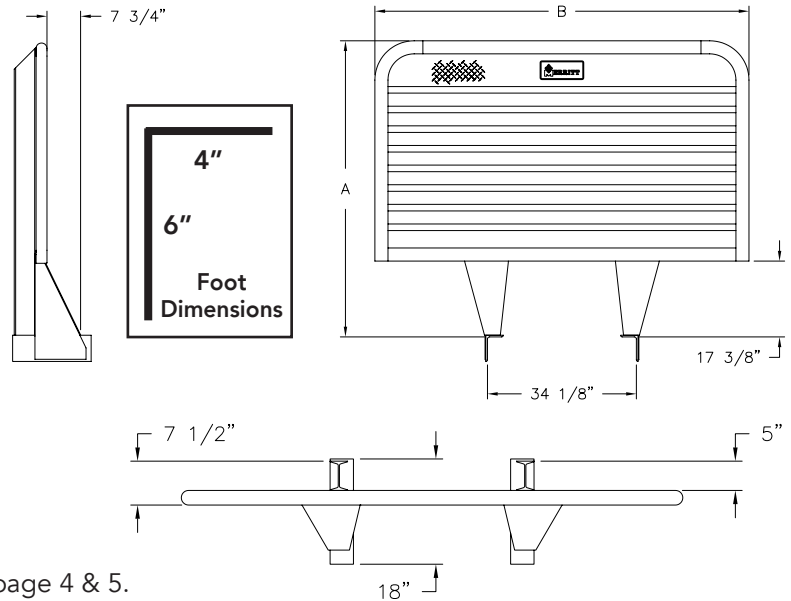
- Increased clearance over the standard Cab Rack.
- Fits any Merritt Cab Rack, Dyna-Light or Diamond Back. (15 Models)
- Drill pattern mounting instruction attached to the foot for ease of installation.
- Fits most standard truck frame widths.
- Special tray options are available to maximize trailer swing clearance. (See option order information)

OPTIONS – SHORT FOOT CAB RACK



STEP 1: Select your Short Foot Base Unit from the chart below:

PART#	DESCRIPTION	HxW	WT.
317301	Dyna-Light - Radius Corner	68" x 70"	122
318301	Dyna-Light - Radius Corner	68" x 76"	125
319301	Dyna-Light - Radius Corner	68" x 86"	130
320301	Dyna-Light - Radius Corner	68" x 80"	128
321301	Dyna-Light - Radius Corner	73" x 78"	133
322301	Dyna-Light - Radius Corner	75" x 86"	140
3750301	Dyna-Light - Radius Corner	80" x 76"	176
370301	Diamond Back - 45° Corner	68" x 70"	122
371301	Diamond Back - 45° Corner	68" x 86"	130



STEP 2: Select Short Foot Base Unit.

Choose your accessories from Cab Rack Options on page 4 & 5.



OPTION #628: 5" Deep Full Tray with Two Locking Chain Racks



OPTION #605: Low Mount Tray

- Use grade 8 bolts to mount. Refer to the Merritt Mounting Instructions for correct installation. (Not Included)
- Requires drilling frame rail



Call the Merritt Customer Service Team with questions & clarification. 800.525.0107

This cab rack is NOT A SAFETY DEVICE and will NOT PREVENT SERIOUS INJURY or DEATH from forward shifting cargo as a result of an accident or improper securement.

To prevent SERIOUS INJURY or DEATH:

- ALWAYS secure your cargo in compliance with FMCSA/DOT regulations. See 49 CFR 393 for specific requirements. Be aware of any applicable state motor carrier regulations.
- NEVER consider this cab rack to be part of your cargo securement system. It is not a substitute for any cargo securement device and does not change any of the cargo securement requirements.
- NEVER haul a log trailer or a pole trailer with this cab rack installed. It is a misuse of the cab rack and is strictly prohibited by Merritt Aluminum Products Company.
- NEVER allow cargo to contact cab rack or use cab rack as a tie down point.
- INSPECT cab rack weekly for cracks or damage. If damaged, replace cab rack.
- CHECK torque of all bolts every 90 days. Bolts on Moon Brackets 150ft.-lbs. dry.
- Use cab rack for storing chains and equipment. For more information, visit www.merrittproducts.com
- ONLY use a Merritt Mounting Kit. If a Merritt Mounting Kit is not used to install a Merritt cab rack, then your cab rack warranty will be void.

WARNING:

NEVER reuse a mounting kit. ALWAYS read and follow the Merritt Mounting Kit Assembly Instructions to ensure proper installation. If you do not have the proper equipment or skill to install the cab rack, take your vehicle to an authorized dealer.





All-in-One, Mount & Go



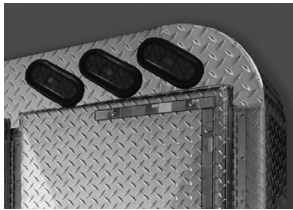
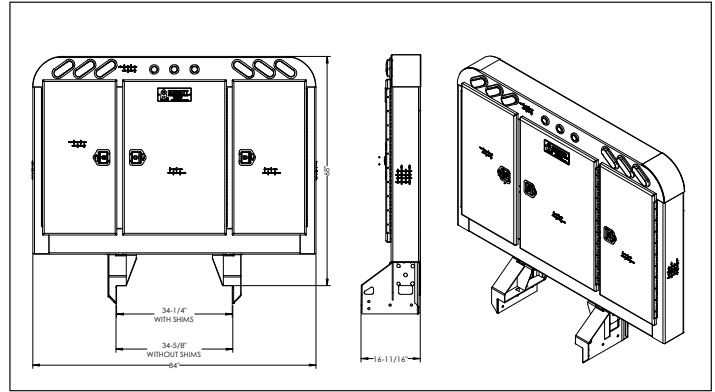
- The Northern-Light CR unit comes standard with a 3 door enclosure and LED lights (as shown).
- 6' Wiring harness.
- 2 chain hangers in each outside compartment.
- 2 heavy duty shelves in the center compartment.
- The enclosure has 8" and 11" deep options available.
- The unique foot allows you to mount it with a 324 or 325 U-bolt kit or it can mount like a Short Foot by bolting through the frame web.
- It does not have rear beams, you can mount the unit 5" closer than a normal enclosure unit.
- Northern-Light CR, 68" X 84", with lights, shelves and chain hangers.

Models and/or Specifications Subject to Change Without Notice.



STEP 1:

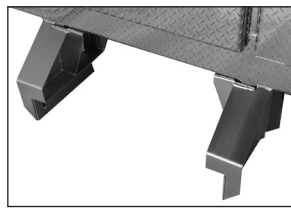
PART#	DESCRIPTION	HxW	WT.
3700	8" Deep, All Diamond Plate	68" x 84"	310
3701	8" Deep, Bright Smooth Doors	68" x 84"	310
3702	8" Deep, Stainless steel Doors	68" x 84"	327
3710	11" Deep, All Diamond Plate	68" x 84"	334
3711	11" Deep, Bright Smooth Doors	68" x 84"	334
3712	11" Deep, Stainless steel Doors	68" x 84"	363
3240	Northern-Light Clamp Kit (14" U-bolts)	-	25



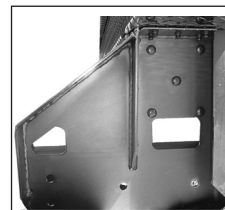
Three LED stop/turn lights in each corner.



Three LED marker lights centered.



The foot is made of steel and is Zinc plated for anti-rust and a finished look.



Foot assembly with the cut outs for the U-bolts to mount through and also, the pre-drilled mounting holes for side mounting. Your choice!



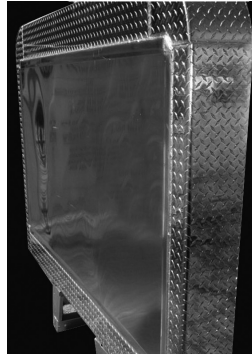
Inside view of the foot. Please note the design to achieve the strength needed.



Center compartment with 2 shelves.



Chain hangers in each side compartment



No rear Beams. You can get the unit closer to the cab than a normal CR.

Must be side mounted (drilled) or mounted with the 3240 kit.



Call the Merritt Customer Service Team with questions & clarification. 800.525.0107

This cab rack is NOT A SAFETY DEVICE and will NOT PREVENT SERIOUS INJURY or DEATH from forward shifting cargo as a result of an accident or improper securement.

To prevent SERIOUS INJURY or DEATH:

- ALWAYS secure your cargo in compliance with FMCSA/DOT regulations. See 49 CFR 393 for specific requirements. Be aware of any applicable state motor carrier regulations.
- NEVER consider this cab rack to be part of your cargo securement system. It is not a substitute for any cargo securement device and does not change any of the cargo securement requirements.
- NEVER haul a log trailer or a pole trailer with this cab rack installed. It is a misuse of the cab rack and is strictly prohibited by Merritt Aluminum Products Company.
- NEVER allow cargo to contact cab rack or use cab rack as a tie down point.
- INSPECT cab rack weekly for cracks or damage. If damaged, replace cab rack.
- CHECK torque of all bolts every 90 days. Bolts on Moon Brackets 150ft.-lbs. dry.
- Use cab rack for storing chains and equipment. For more information, visit www.merrittproducts.com
- ONLY use a Merritt Mounting Kit. If a Merritt Mounting Kit is not used to install a Merritt cab rack, then your cab rack warranty will be void.

WARNING:

NEVER reuse a mounting kit. ALWAYS read and follow the Merritt Mounting Kit Assembly Instructions to ensure proper installation. If you do not have the proper equipment or skill to install the cab rack, take your vehicle to an authorized dealer.





Need a Cab Rack with a Deck?



302

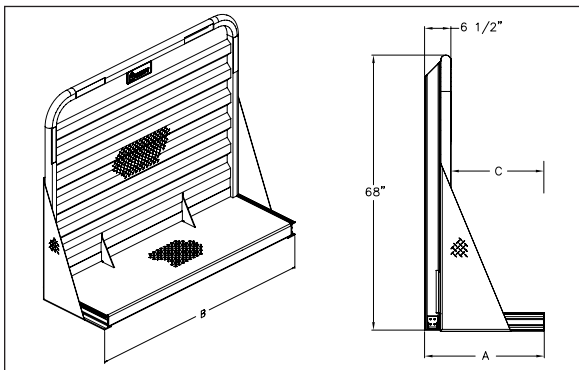
- Great for storage, one door, two door and full three door enclosures are available. Internal shelves and chain hangers are popular options. Keep your storage items out of the weather and out of sight.
- Drom decks available from 30" to 96". (See drawing on page 13 - Dimension A)
- Decks are designed to carry 1000 lbs. per linear foot, allowing for more cargo carrying area.
- Aerodynamic shape patterned with the new truck designs.
- Full enclosure option available on all models.

Models and/or Specifications Subject to Change Without Notice.



STEP 1: Dyna-Drom

PART#	DESCRIPTION	HxWxL	WT.
302	Dyna-Drom	68" x 80" x 30"	212
303	Dyna-Drom	68" x 80" x 48"	271
304	Dyna-Drom	68" x 80" x 72"	319
305	Dyna-Drom	68" x 80" x 96"	388
346	Dyna-Drom	68" x 86" x 30"	227
347	Dyna-Drom	68" x 86" x 48"	291
348	Dyna-Drom	68" x 86" x 72"	343
349	Dyna-Drom	68" x 86" x 96"	417
342	Dyna-Drom	68" x 96" x 30"	244
343	Dyna-Drom	68" x 96" x 48"	300
344	Dyna-Drom	68" x 96" x 72"	360
345	Dyna-Drom	68" x 96" x 96"	440



STEP 2: Dyna-Drom Options

OPTION#	DESCRIPTION	WT.
142	Grab Handle, 25"	1
144	Bracket, Load Light	1
369	E-Z View Window	-
386	E-Z View Window, Full View	-
128	Chain Rack, without Cover	3
147	Chain Rack, with Locking Cover	5
359	Chain Tray, Drom, Full Width	27

OPTION#	DESCRIPTION	HxWxL	WT.
414	Enclosure 3-Door	64" x 80" x 14"	127
356	Enclosure 3-Door	64" x 86" x 14"	136
357	Enclosure 3-Door	64" x 96" x 14"	145

Enclosures:

- Extruded door frame with a full perimeter automotive grade door seal.
- Piano style hinges, 2" Stainless steel Hinge.
- Stainless steel door option available.

STEP 3: Mounting Options

PART#	MOUNTING KIT
351	Drom Mounting Kit for Decks to 4' - 14" Bolts
353	Drom Mounting Kit for Decks 4'6" to 8' - 14" Bolts
354	Drom Mounting Kit for Decks 8'6" & Over - 14" Bolts

- 17" U-bolts are available upon request for chassis with deep frame dimensions.
- Must be installed to Merritt Specifications with a Merritt Mounting Kit.
- Mounting Kits not Included.



Call the Merritt Customer Service Team with questions & clarification. 800.525.0107

This cab rack is NOT A SAFETY DEVICE and will NOT PREVENT SERIOUS INJURY or DEATH from forward shifting cargo as a result of an accident or improper securement.

To prevent SERIOUS INJURY or DEATH:

- ALWAYS secure your cargo in compliance with FMCSA/DOT regulations. See 49 CFR 393 for specific requirements. Be aware of any applicable state motor carrier regulations.
- NEVER consider this cab rack to be part of your cargo securement system. It is not a substitute for any cargo securement device and does not change any of the cargo securement requirements.
- NEVER haul a log trailer or a pole trailer with this cab rack installed. It is a misuse of the cab rack and is strictly prohibited by Merritt Aluminum Products Company.
- NEVER allow cargo to contact cab rack or use cab rack as a tie down point.
- INSPECT cab rack weekly for cracks or damage. If damaged, replace cab rack.
- CHECK torque of all bolts every 90 days. Bolts on Moon Brackets 150ft.-lbs. dry.
- Use cab rack for storing chains and equipment. For more information, visit www.merrittproducts.com
- ONLY use a Merritt Mounting Kit. If a Merritt Mounting Kit is not used to install a Merritt cab rack, then your cab rack warranty will be void.

WARNING:

NEVER reuse a mounting kit. ALWAYS read and follow the Merritt Mounting Kit Assembly Instructions to ensure proper installation. If you do not have the proper equipment or skill to install the cab rack, take your vehicle to an authorized dealer.





Aluminum Cabinet CR



- Large storage area, keep your storage items out of the weather and out of sight.
- No rear uprights, allowing for closer installation to the truck cab, a real space saver.
- Chain hangers and a full width top shelf are built into the design of the Cabinet CR.
- Full three door enclosure. A very compact, usable storage unit.
- Additional mounting brackets not required for standard installations (drilling is required).
A problem solver, mounting system is available for non-standard applications.
- Side door option available for easy access from the ground.
- Shims are provided to accommodate all standard frame widths.
- Smooth Doors are available.

Models and/or Specifications Subject to Change Without Notice.

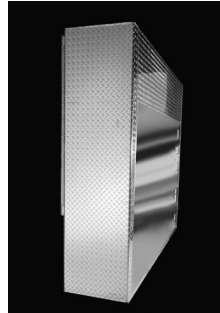
STEP 1: BASE

PART#	DESCRIPTION	HxWxL	WT.
310	Cabinet-CR	68" x 84" x 18"	320

- Use grade 8 bolts to mount. Refer to the Merritt Mounting Instructions for correct installation.
- Extruded Door Frame with a Full Perimeter Automotive Grade Door Seal.
- 2" Stainless steel Hinges.
- Diamond Plate Surface.
- Stainless steel Door Locks with Dust Covers.
- New Side Door Option for Easier Access to Your Storage Areas.
- UHMW used for Lock Striker Plate, for Easier Operation and Longer Life.

STEP 2: Additional Options

OPTION#	DESCRIPTION	WT.
309	Tarp Strap Holders	1
311	Problem Solver Mounting Kit	81
312	Side Door Assembly (left or right)	16
313	Sliding Beacon Bracket	10
314	Chain Hangers	2
392	Hose Tender	6



Back side of 310

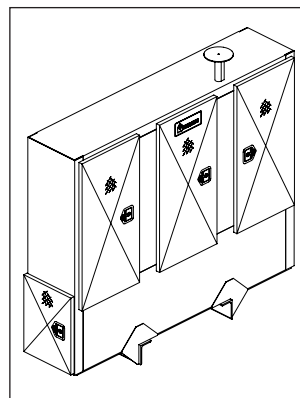
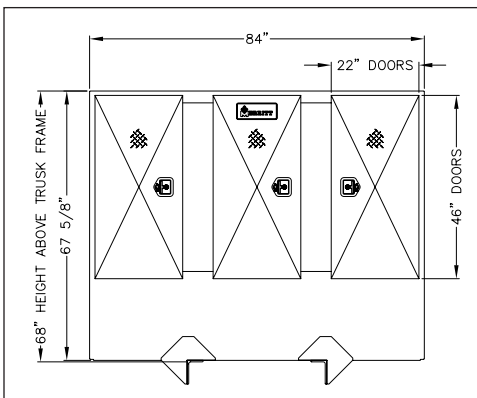


392 & 313 pictured

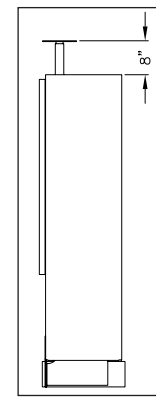
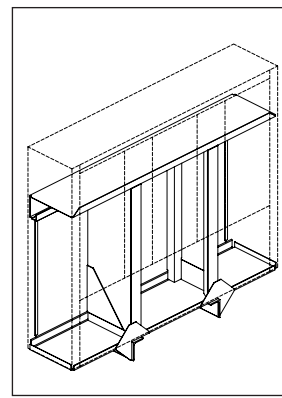


Internal View

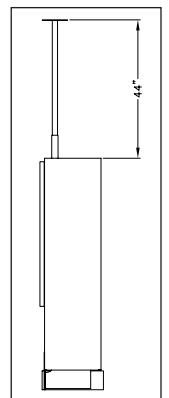
STEP 3: Call Merritt Customer Service: 800.525.0107



NOTE: Shown with
OPTIONS 312 & 313



Beacon Bracket
UP Position



Beacon Bracket
DOWN
Position

Call the Merritt Customer Service Team with questions & clarification. 800.525.0107

This cab rack is NOT A SAFETY DEVICE and will NOT PREVENT SERIOUS INJURY or DEATH from forward shifting cargo as a result of an accident or improper securement.

To prevent SERIOUS INJURY or DEATH:

- ALWAYS secure your cargo in compliance with FMCSA/DOT regulations. See 49 CFR 393 for specific requirements. Be aware of any applicable state motor carrier regulations.
- NEVER consider this cab rack to be part of your cargo securement system. It is not a substitute for any cargo securement device and does not change any of the cargo securement requirements.
- NEVER haul a log trailer or a pole trailer with this cab rack installed. It is a misuse of the cab rack and is strictly prohibited by Merritt Aluminum Products Company.
- NEVER allow cargo to contact cab rack or use cab rack as a tie down point.
- INSPECT cab rack weekly for cracks or damage. If damaged, replace cab rack.
- CHECK torque of all bolts every 90 days. Bolts on Moon Brackets 150ft.-lbs. dry.
- Use cab rack for storing chains and equipment. For more information, visit www.merrittproducts.com
- ONLY use a Merritt Mounting Kit. If a Merritt Mounting Kit is not used to install a Merritt cab rack, then your cab rack warranty will be void.

WARNING:

NEVER reuse a mounting kit. ALWAYS read and follow the Merritt Mounting Kit Assembly Instructions to ensure proper installation. If you do not have the proper equipment or skill to install the cab rack, take your vehicle to an authorized dealer.





Frame Mounted Tool Boxes



Diamond Plate Double Door



Diamond Plate Single Door



Smooth Double Door



Smooth Single Door

- Constructed of high strength/low weight aluminum.
- Protective coating on smooth doors for improved shipping protection (to be removed at time of installation.)
- 4 Standard base models.
- Polished stainless steel T-handle latches with locks.
- Doors available in smooth finish or diamond plate. All smooth doors are polished to a #8 grade for an exceptional appearance.
- Stainless steel piano style hinge.
- Stainless steel doors are available by special order.
- Custom sizes and designs are available to meet specific needs.
- Door lanyards and shelf options available. Call customer service.
- Stocked in most Merritt warehouse locations.

Models and/or Specifications Subject to Change Without Notice.





SMOOTH DOORS

PART#	DIM. HxWxL & DESCRIPTION	WT.
201	18"x18"x18" Single Door	25
203	18"x18"x24" Single Door	36
205	18"x18"x30" Single Doors	42
207	18"x18"x36" Single Door	48
287	18"x18"x36" Double Door	49
209	18"x18"x48" Single Door	60
211	18"x18"x48" Double Door	61
289	18"x18"x60" Single Door	69
291	18"x18"x60" Double Door	70
213	24"x24"x24" Single Door	47
215	24"x24"x30" Single Door	56
217	24"x24"x36" Single Door	64
235	24"x24"x36" Double Door	61
219	24"x24"x48" Single Door	77
221	24"x24"x48" Double Door	79
223	24"x24"x60" Single Door	105
225	24"x24"x60" Double Door	107
293	18"x24"x48" Single Door	66
295	18"x24"x48" Double Door	67
297	18"x24"x60" Single Door	87
299	18"x24"x60" Double Door	88

*Stainless steel Door Option Available.

DIAMOND PLATED DOORS

PART#	DIM. HxWxL & DESCRIPTION	WT.
202	18"x18"x18" Single Door	25
204	18"x18"x24" Single Door	36
206	18"x18"x30" Single Doors	42
208	18"x18"x36" Single Door	48
288	18"x18"x36" Double Door	49
210	18"x18"x48" Single Door	60
212	18"x18"x48" Double Door	61
290	18"x18"x60" Single Door	69
292	18"x18"x60" Double Door	70
214	24"x24"x24" Single Door	47
216	24"x24"x30" Single Door	56
218	24"x24"x36" Single Door	64
236	24"x24"x36" Double Door	61
220	24"x24"x48" Single Door	77
222	24"x24"x48" Double Door	79
224	24"x24"x60" Single Door	105
226	24"x24"x60" Double Door	107
294	18"x24"x48" Single Door	66
296	18"x24"x48" Double Door	67
298	18"x24"x60" Single Door	87
300	18"x24"x60" Double Door	88

*Custom Designs & Sizes Available.

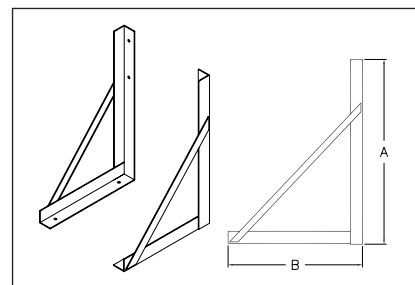
TOOL BOX OPTIONS

OPTION#	DIM. HxWxL & DESCRIPTION	WT.
1518	18" Lanyard Kit, Tool Box	1
1519	18" Lanyard Kit, Tool Box	1
1824	Shelf, Bolt-in, for 18"x24" Tool Box	7
1830	Shelf, Bolt-in, for 18"x30" Tool Box	10
1836	Shelf, Bolt-in, for 18"x36" Tool Box	12
1848	Shelf, Bolt-in, for 18"x48" Tool Box	16
1860	Shelf, Bolt-in, for 18"x60" Tool Box	23
2424	Shelf, Bolt-in, for 24"x24" Tool Box	10
2430	Shelf, Bolt-in, for 24"x30" Tool Box	12
2436	Shelf, Bolt-in, for 24"x36" Tool Box	15
2448	Shelf, Bolt-in, for 24"x48" Tool Box	19
2460	Shelf, Bolt-in, for 24"x60" Tool Box	23

ZINC PLATED STEEL MOUNTING BRACKETS

PART#	DIM. HxWxL & DESCRIPTION	A	B	WT.
117	For 18" Deep Tool Box	23-13/16"	16"	18
118	For 24" Deep Tool Box	29-13/16"	22"	25
620	E-Z Mounting Kit for 18" Tool Boxes	23-13/16"	16"	24
621	E-Z Mounting Kit for 24" Tool Boxes	29-13/16"	22"	31

- All Steel for strength and low cost, Zinc Plated for lasting good looks!
- Available for 18" or 24" deep Tool Boxes.
- Lightweight design - 117 only 18 lbs, 118 only 25 lbs.



- Vertical angle is high strength alloy and 1/4" thick.

- UHMW Plastic used on striker plate for longer latch assembly life and easier operation.
- Automotive grade door seals, secures the entire perimeter, for a more water resistant seal
- Merritt's extruded door frame provides a weather resistant seal.
- Lap joint weld provides material overlap in the corner where it is needed for superior strength and longer life (compared to most boxes that are constructed with butt welds).

Call the Merritt Customer Service Team with questions & clarification. 800.525.0107



S-SERIES TOOL BOXES

Stackable Aluminum Boxes



- Mount under body, on top of the deck, side-by-side – the door will open.
- Constructed of high strength/low weight aluminum.
- 42 Standard base models.
- Polished stainless steel T-handle latches with locks.
- Doors available in smooth finish or diamond plate. All smooth doors are polished to a #8 grade for an exceptional appearance.
- Bullet style hinge with 1/4" Stainless steel center pin.
- Protective coating on smooth doors are improved shipping protection (to be removed at time of installation).
- Stainless steel doors are available by special order.
- Custom sizes and designs are available to meet specific needs.

Models and/or Specifications Subject to Change Without Notice.





SMOOTH DOORS

PART#	DIM. HxWxL & DESCRIPTION	WT.
3573	18"x17-3/16"x18" Single Door	24
3575	18"x17-3/16"x24" Single Door	36
3577	18"x17-3/16"x30" Single Doors	42
3579	18"x17-3/16"x36" Single Door	48
3581	18"x17-3/16"x36" Double Door	49
3583	18"x17-3/16"x48" Single Door	60
3585	18"x17-3/16"x48" Double Door	61
3587	18"x17-3/16"x60" Single Door	69
3589	18"x17-3/16"x60" Double Door	70
3613	18"x23-3/16"x48" Double Door	66
3609	18"x23-3/16"x48" Single Door	67
3615	18"x23-3/16"x60" Single Door	87
3617	18"x23-3/16"x60" Double Door	88
3593	24"x23-3/16"x24" Single Door	47
3595	24"x23-3/16"x30" Single Door	56
3597	24"x23-3/16"x36" Single Door	64
3599	24"x23-3/16"x36" Double Door	61
3601	24"x23-3/16"x48" Single Door	77
3603	24"x23-3/16"x48" Double Door	79
3607	24"x23-3/16"x60" Double Door	105
3605	24"x23-3/16"x60" Single Door	107

*Stainless steel Door Option Available.

DIAMOND PLATED DOORS

PART#	DIM. HxWxL & DESCRIPTION	WT.
3570	18"x17-3/16"x18" Single Door	25
3572	18"x17-3/16"x24" Single Door	36
3574	18"x17-3/16"x30" Single Door	42
3576	18"x17-3/16"x36" Single Door	48
3578	18"x17-3/16"x36" Double Door	49
3582	18"x17-3/16"x48" Single Door	60
3584	18"x17-3/16"x48" Double Door	61
3588	18"x17-3/16"x60" Single Door	69
3586	18"x17-3/16"x60" Double Door	70
3608	18"x23-3/16"x48" Single Door	47
3612	18"x23-3/16"x48" Double Door	56
3614	18"x23-3/16"x60" Single Door	64
3616	18"x23-3/16"x60" Double Door	61
3590	24"x23-3/16"x24" Single Door	77
3592	24"x23-3/16"x30" Single Door	79
3594	24"x23-3/16"x36" Single Door	105
3596	24"x23-3/16"x36" Double Door	107
3600	24"x23-3/16"x48" Single Door	66
3602	24"x23-3/16"x48" Double Door	67
3604	24"x23-3/16"x60" Single Door	87
3606	24"x23-3/16"x60" Double Door	88

*Custom Designs & Sizes Available.

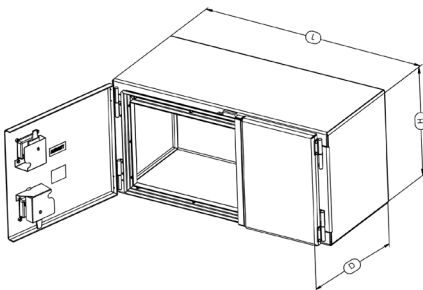
TOOL BOX OPTIONS

OPTION#	DESCRIPTION	WT.
3546	Kit, Gas Shock and Mount for S-Series and STD Tool Boxes	6
1518	18" Lanyard Kit, Tool Box	1
1519	24" Lanyard Kit, Tool Box	1

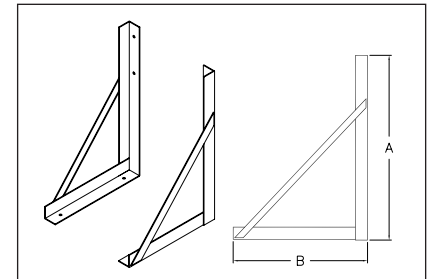
ZINC PLATED STEEL MOUNTING BRACKETS

PART#	DIM. HxWxL & DESCRIPTION	A	B	WT.
117	For 18" Deep Tool Box	23-13/16"	16"	18
118	For 24" Deep Tool Box	29-13/16"	22"	25
620	E-Z Mounting Kit for 18" Tool Boxes	23-13/16"	16"	24
621	E-Z Mounting Kit for 24" Tool Boxes	29-13/16"	22"	31

- All Steel for strength and low cost, Zinc Plated for lasting good looks!
- Available for 18" or 24" deep Tool Boxes.
- Lightweight design - 117 only 18 lbs, 118 only 25 lbs.



- UHMW Plastic used on striker plate for longer latch assembly life and easier operation.
- Automotive grade door seals, secures the entire perimeter, for a more water resistant seal
- Merritt's extruded door frame provides a weather resistant seal.
- Lap joint weld provides material overlap in the corner where it is needed for superior strength and longer life (compared to most boxes that are constructed with butt welds).



- Vertical angle is high strength alloy and 1/4" thick.

Call the Merritt Customer Service Team with questions & clarification. 800.525.0107



Cam Lock Tool Boxes



6500

- Constructed of high durable/light weight aluminum.
- Protective coating on smooth doors for improved shipping protection (to be removed at time of installation).
- Latch hardware is aluminum electro-polished for superior finish.
- Doors available in smooth finish or diamond plate.
- 2" stainless steel hinge.
- Stainless steel doors are available by special order.
- Shelf options available.
- Boxes are available in 18" and 24" heights.
- Custom depth and length are available to meet specific needs.

Models and/or Specifications Subject to Change Without Notice.





CAM LOCK BOX Smooth Doors

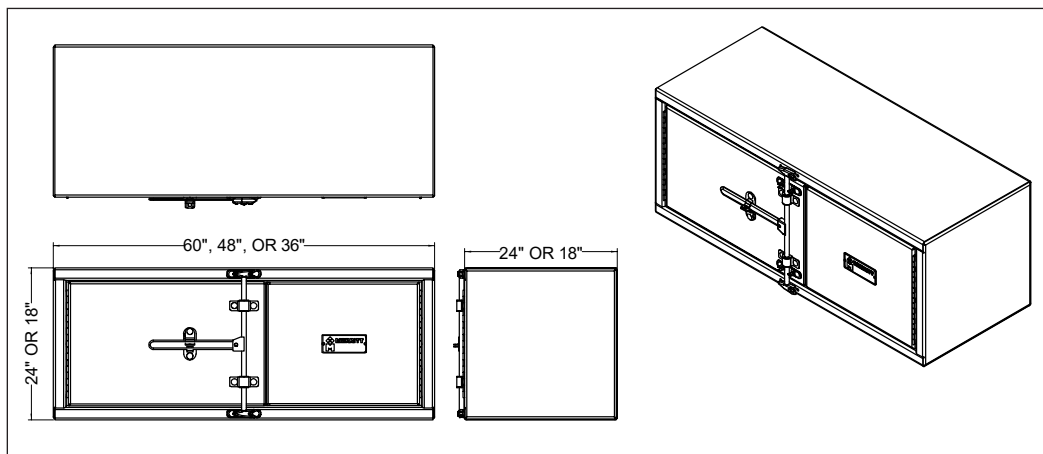
PART#	DIM. HxWxL & DESCRIPTION	WT.
6500	18"x18"x36" Double Door	49
6502	18"x18"x48" Double Door	61
6504	18"x18"x60" Double Door	70
6506	18"x24"x36" Double Door	54
6508	18"x24"x48" Double Door	67
6510	18"x24"x60" Double Door	88
6512	24"x24"x36" Double Door	61
6514	24"x24"x48" Double Door	79
6516	24"x24"x60" Double Door	107

CAM LOCK BOX Diamond Plate Doors

PART#	DIM. HxWxL & DESCRIPTION	WT.
6501	18"x18"x36" Double Door	50
6503	18"x18"x48" Double Door	62
6505	18"x18"x60" Double Door	71
6507	18"x24"x36" Double Door	55
6509	18"x24"x48" Double Door	68
6511	18"x24"x60" Double Door	89
6513	24"x24"x36" Double Door	62
6515	24"x24"x48" Double Door	80
6517	24"x24"x60" Double Door	108

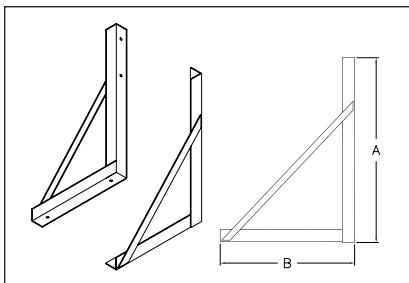
CAM LOCK BOX OPTIONS

OPTION#	DIM. HxWxL & DESCRIPTION	WT.
1836	Shelf, Bolt-In, for 18"x36" Tool Box	12
1848	Shelf, Bolt-In, for 18"x48" Tool Box	16
1860	Shelf, Bolt-In, for 18"x60" Tool Box	23
2436	Shelf, Bolt-In, for 24"x36" Tool Box	15
2448	Shelf, Bolt-In, for 24"x48" Tool Box	19
2460	Shelf, Bolt-In, for 24"x60" Tool Box	23



- Automotive grade door seals, secures the entire perimeter, for a more water resistant seal.
- Lap joint weld provides material overlap in the corner where it is needed for superior durability and longer life (compared to most boxes that are constructed with butt weld).

ZINC PLATED STEEL MOUNTING BRACKETS



- Vertical angle is high strength alloy and 1/4" thick. Lightweight design..

PART#	DIM. HxWxL & DESCRIPTION	A	B	WT.
117	For 18" Deep Tool Box	23-13/16"	16"	18
118	For 24" Deep Tool Box	29-13/16"	22"	25
620	E-Z Mounting Kit for 18" Tool Boxes	23-13/16"	16"	24
621	E-Z Mounting Kit for 24" Tool Boxes	29-13/16"	22"	31

- All Steel for strength and low cost, Zinc Plated for lasting good looks!
- Available for 18" or 24" deep Tool Boxes.
- Lightweight design - 117 only 18 lbs, 118 only 25 lbs.



Call the Merritt Customer Service Team with questions & clarification. 800.525.0107



Saddle Boxes & Other Storage Boxes



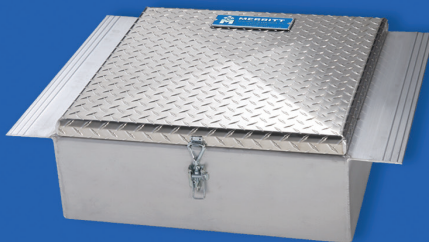
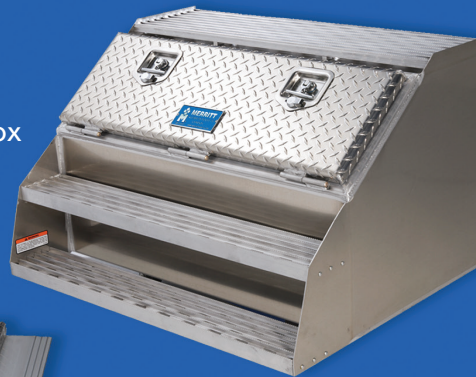
18" Saddle Box

12" Saddle Box
with Steps



Logger Box

36" Saddle Box
with Steps



Between Frame Tool Box



Fold Away Handle

- Utilize unused frame space and add additional storage areas.
- Heavy Duty designs on all storage boxes for longer life.
- Aluminum for low weight, yet high strength.
- 18 different models to make the most of your frame space.
- Saddle Boxes now available with optional internal chain rack or dividers.
- Saddle Boxes available with or without steps.
- Extruded door frame with full perimeter automotive door seal for a water resistant closure.
- Mounting Kit welded inside all 12", 18", 24" & 30" Saddle Boxes (bolts not included.)
- 36" Saddle Box must be mounted using external brackets (480 & 481 use bracket 117, 482 & 483 use bracket 118).

Models and/or Specifications Subject to Change Without Notice.



SMOOTH DOORS

PART#	DIM. HxWxL & DESCRIPTION	WT.
450	22" x 21" x 12"	27
452	23-1/2" x 28-1/2" x 12" w/ step	34
460	22" x 21" x 18"	32
462	23-1/2" x 28-1/2" x 18" w/ step	42
470	22" x 21" x 24"	43
472	23-1/2" x 28-1/2" x 24" w/ step	56
480*	22" x 21" x 36"	56
482*	23-1/2" x 28-1/2" x 36" w/ step	76
478	22" x 21" x 30"	50
488	23-1/2" x 28-1/2" x 30" w/ step	67

* Model 117 or 118 Mounting Kit Required.

DIAMOND PLATED DOORS

PART#	DIM. HxWxL & DESCRIPTION	WT.
451	22" x 21" x 12"	27
453	23-1/2" x 28-1/2" x 12" w/ step	34
461	22" x 21" x 18"	32
463	23-1/2" x 28-1/2" x 18" w/ step	43
471	22" x 21" x 24"	44
473	23-1/2" x 28-1/2" x 24" w/ step	57
481*	22" x 21" x 36"	57
483*	23-1/2" x 28-1/2" x 36" w/ step	77
477	22" x 21" x 30"	52
487	23-1/2" x 28-1/2" x 30" w/ step	69

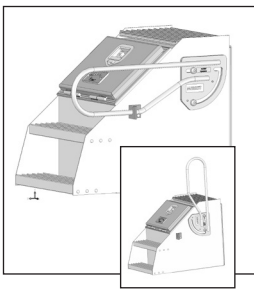
* Model 117 or 118 Mounting Kit Required.

CHAIN KIT RACK

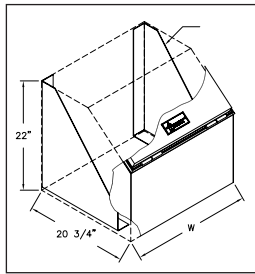
OPTION#	DIM. HxWxL & DESCRIPTION	WT.
486-1	Saddle Box Chain Rack, 12"	1
486-2	Saddle Box Chain Rack, 18"	1
486-3	Saddle Box Chain Rack, 24"	1
486-4	Saddle Box Chain Rack, 36"	1

Saddle Box Divider

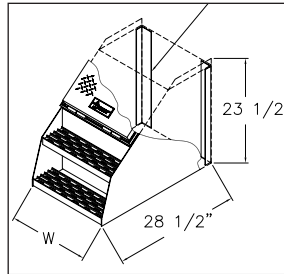
OPTION#	DIM. HxWxL & DESCRIPTION	WT.
485-1	Saddle Box Divider Set, 12"	2
485-2	Saddle Box Divider Set, 18"	2
485-3	Saddle Box Divider Set, 24"	2
485-4	Saddle Box Divider Set, 36"	2



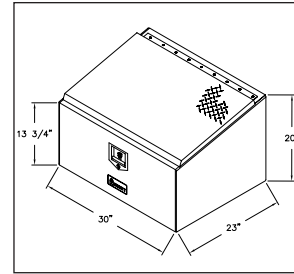
Fixed or Fold-away Handle



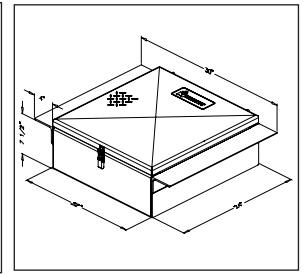
Saddle Box without Steps



Saddle Box with Steps



Logger Box



Between the Frame Tool Box

Saddle Box Folding & Fixed Handles

PART#	DIM. HxWxL & DESCRIPTION	WT.
3518	Folding Handle R/H	11
3519	Folding Handle L/H	11
3524	Fixed Handle R/H	5
3525	Fixed Handle L/H	5

Mounts to any Merritt Saddle Box.

Logger Box

Easy cross frame mounting kit is included.
Can be side-frame mounted using #118 mounting kit.

PART#	DIM. HxWxL & DESCRIPTION	WT.
229	Logger Box w/ Cross Frame Mounting Kit: 20" x 23" x 30"	54

Between-the Frame Tool Box

Easy installation using clamps - no drilling of the frame. Mounting kit included.

PART#	DIM. HxWxL & DESCRIPTION	WT.
253	Diamond Plate Door w/ Mounting Kit: 22" x 9" x 24"	36

ZINC PLATED STEEL MOUNTING BRACKETS

PART#	DIM. HxWxL & DESCRIPTION	A	B	WT.
117	For 18" Deep Tool Box	23-13/16"	16"	18
118	For 24" Deep Tool Box	29-13/16"	22"	25
620	E-Z Mounting Kit for 18" Tool Boxes	23-13/16"	16"	24
621	E-Z Mounting Kit for 24" Tool Boxes	29-13/16"	22"	31

- All Steel for strength and low cost, Zinc Plated for lasting good looks!
- Available for 18" or 24" deep Tool Boxes.
- Lightweight design - 117 only 18 lbs, 118 only 25 lbs.

Call the Merritt Customer Service Team with questions & clarification. 800.525.0107



Top Opening Saddle Boxes



- 20 different sizes to choose from
- Available in smooth aluminum or diamond plate doors
- With or without steps in all sizes
- Top step opens along with the door for convenient storage of larger items
- Internal mounting included on boxes up to 24" wide
- Interior chain racks and dividers available separately
- Locking T-Handle latch comes with dust cover and 2 keys
- Can use external L-Brackets for added mounting strength
- Optional grab handles available separately
- Extruded door frame for added strength
- Full perimeter automotive door seal for water resistant closure
- High quality shock assembly for long lasting use
- Strong Bullet hinge

SMOOTH FINISH

PART#	DIM. HxWxL & DESCRIPTION	WT.
6450	22"x21"x12"	41
6452	23.5"x28.5"x12" w/ Step	49
6460	22"x21"x18"	56
6462	23.5"x28.5"x18" w/ Step	68
6470	22"x21"x24"	57
6472	23.5"x28.5"x24" w/ Step	87
6478	22"x21"x30"	72
6480	22"x21"x36"	80
6482	23.5"x28.5"x36" w/ Step	107
6488	23.5"x28.5"x30" w/ Step	98

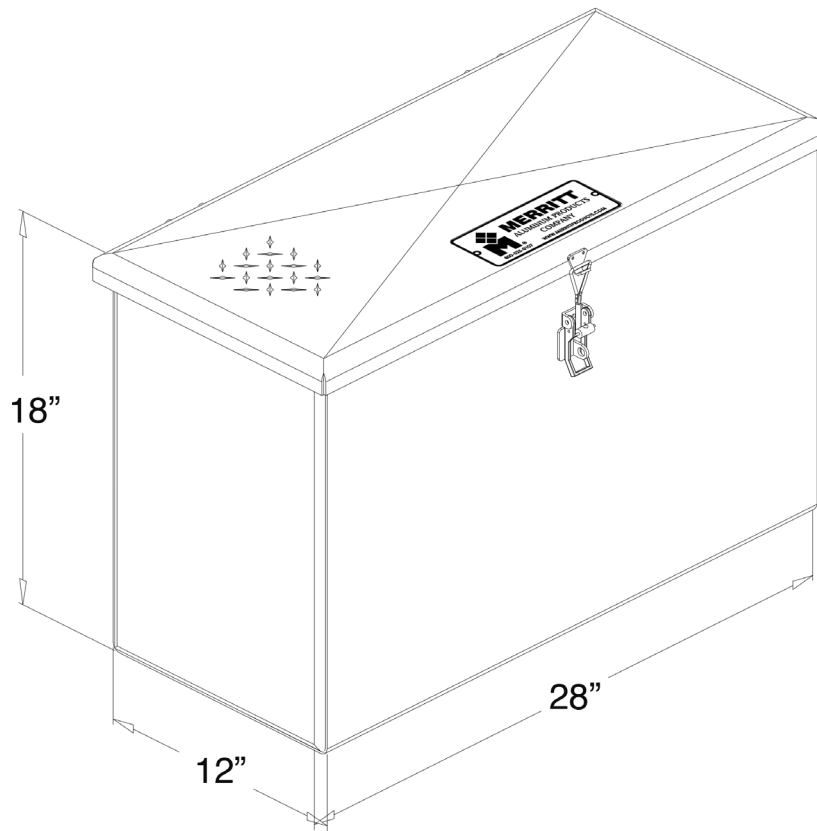
DIAMOND PLATED

PART#	DIM. HxWxL & DESCRIPTION	WT.
6451	22"x21"x12"	41
6453	23.5"x28.5"x12" w/ Step	49
6461	22"x21"x18"	56
6463	23.5"x28.5"x18" w/ Step	68
6471	22"x21"x24"	57
6473	23.5"x28.5"x24" w/ Step	87
6477	22"x21"x30"	72
6481	22"x21"x36"	80
6483	23.5"x28.5"x36" w/ Step	107
6487	23.5"x28.5"x30" w/ Step	98

Models and/or Specifications Subject to Change Without Notice.



DEF Storage Boxes



- The DEF Box will carry up to four, one gallon DEF jugs or two 2.5 gallon jugs.
- Mounting Kit is welded inside and can be mounted from either end.
- Mounting brackets are welded in each end, you can mount the box from either end
- Utilizes an "Over Center" latch with padlock.
- Utilize unused frame space and add outside storage for your DEF Products.
- Heavy Duty designs on all DEF boxes for longer life.
- Utilizing Merritt's "Bullet" hinge with 1/4" stainless steel pivot, for no trouble – long life.
- Aluminum for low weight, yet high strength.

DEF STORAGE BOXES

PART#	DIM. HxWxL & DESCRIPTION	WT.
3630	18"x28"x12" DEF Box, Aluminum with Diamond Plate Door	*34



Call the Merritt Customer Service Team with questions & clarification. 800.525.0107

Models and/or Specifications Subject to Change Without Notice.



Cab Access Boxes



Passenger Side
Storage Box

- 5 Models for more application choices.
- High-grade aluminum alloy for low weight & high strength, delivering longer box life.
- Extruded frame step for strength and product life.
- Constructed with the same Merritt tool box features that have time proven designs for a longer product life, less life cycle cost.
- Extruded door frame & automotive door seal on the storage box give a more water resistant seal and added strength.
- Replaceable Steps on all step models.
- Bright Aluminum & Stainless steel door and lid are available as a custom option.

Models and/or Specifications Subject to Change Without Notice.



OPTIONS – CAB ACCESS BOXES



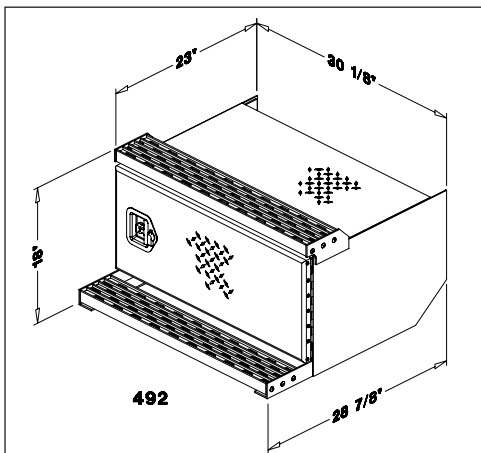
- High-grade aluminum alloy construction for low weight, yet high strength to deliver longer box life.
- Door opening is constructed using an extruded door frame for additional strength.
- Automotive door seal for a water resistant seal.
- Replaceable steps.
- With the optional #496 mounting brackets, you can install these boxes on most truck frames.

CAB ACCESS SIDE STORAGE BOXES

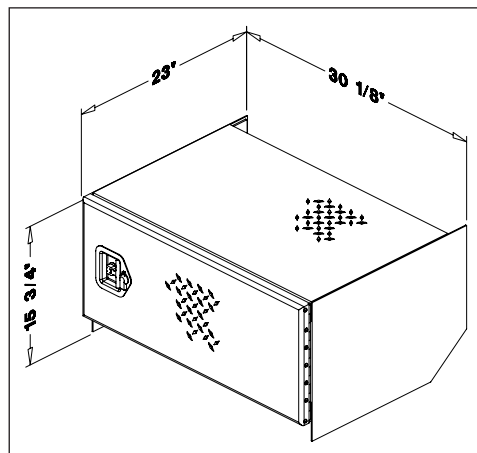
PART#	DIM. HxWxL & DESCRIPTION	WT.
492	18"x 28-7/8"x 30-1/8" Complete with Steps	60
493	15-3/4" x 23"x 30-1/8" Without Steps	49
494	18"x 28-7/8"x 24" Complete with Step	57
495	16-1/4"x 23"x 24" Without Steps, Driver Side	43
498	18"x 28-7/8"x 2" Complete With Steps	67

CAB STORAGE BOX OPTIONS

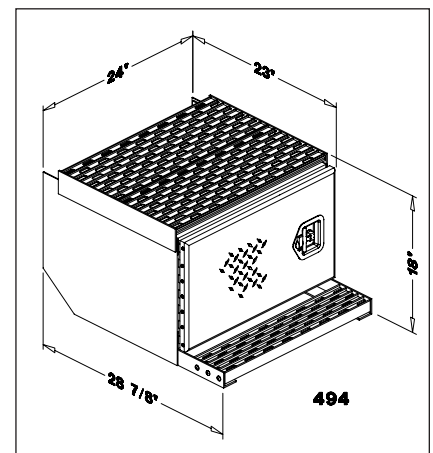
PART#	DESCRIPTION	WT.
496	Mounting Angles	20
497	Battery Hold Down Kit	5



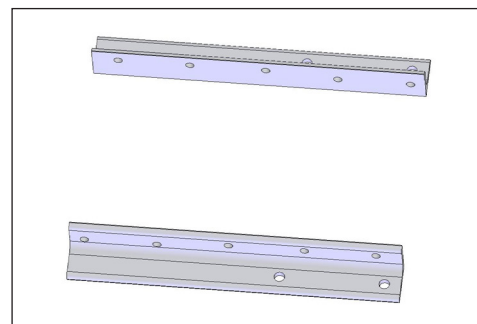
#492



#493



#494



#496



Call the Merritt Customer Service Team with questions & clarification. 800.525.0107



Battery Boxes

STACK PACK SERIES



- Five styles to choose from, to aid in your installation process.
- Four side frame mounts and two in-frame mount.
- Made from a strong, yet light- weight Aluminum alloy, for long life and weight savings.
- Side frame units can mount using a frame drill bracket or a No-Drill kit that does not need to drill the frame. This allows for a savings in installation time.
- All models of battery boxes are stocked In various Merritt Warehouse locations.
- In-Frame box does not require any frame drilling to mount, saving installation time. Comes with mounting kit.
- All boxes come with or have an optional battery hold down kit . You do not need to spend time on how to mount the batteries.

Models and/or Specifications Subject to Change Without Notice.



- Battery Boxes will hold two, four or six group 31 batteries.
- High-grade aluminum alloy construction for low weight, yet high strength to deliver longer Box life.

SIDE-PACK BOX

PART#	DESCRIPTION	DIM: HxWxL	WT.
490	Side Battery Box	18"x 28-7/8"x 30-1/8"	50
491	2 Battery Box, Vertical w/Step	16-1/4" x 23"x 30-1/8"	54

* Without Steps (See below for mounting & battery hold down kits)

STACK-PACK BOX

PART#	DESCRIPTION	DIM: HxWxL	WT.
3552	2 Battery Box, Vertical	24"x20"x10"	50
3561	2 Battery Box, Vertical w/Step	24"x28"x10"	54
3521-1	2 Battery Box, Horizontal	12"x20"x16"	35
3562-1	2 Battery Box, Horizontal w/Step	13"x15-1/2"x16"	41
3503-1	4 Battery Box, Vertical	24"x20"x16"	60
3504-1	4 Battery Box w/Top Deck Plate, Vertical	25"x20"x16"	63
3556-1	4 Battery Box w/Step	25"x25"x16"	77
3514-1	6 Battery Box, Vertical	24"x20"x10"	77
3563	6 Battery Box, Vertical	24"x20"x10"	105

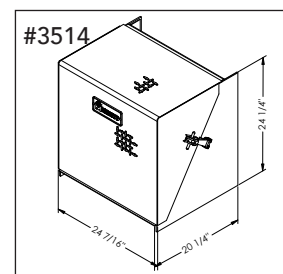
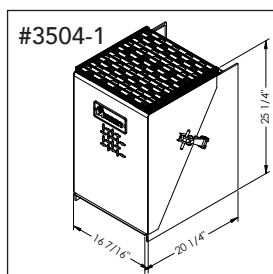
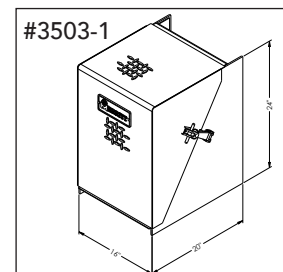
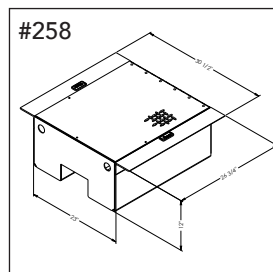
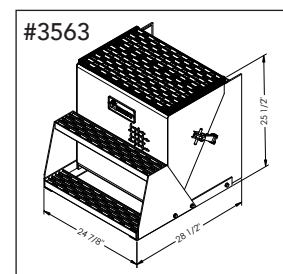
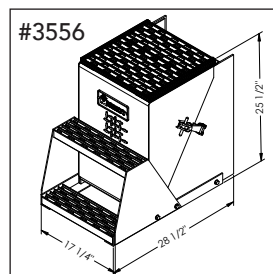
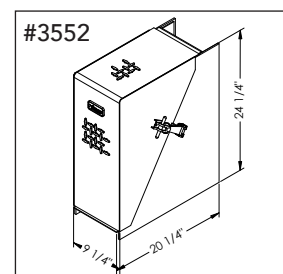
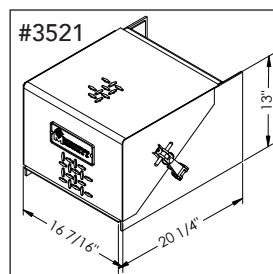
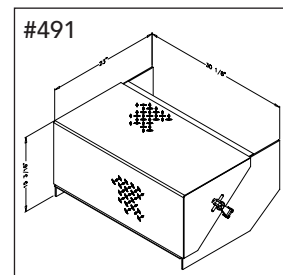
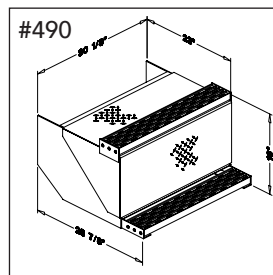
FRAME-PACK BOX

PART#	DESCRIPTION	DIM: HxWxL	WT.
258	4 Battery In-Frame Battery Box*	12"x 23"x 27-3/4"	60
259	2 Battery In-Frame Battery Box	12"x 23"x 13-1/3"	28

* With Hinged Lid. Includes Mounting and Battery Hold Down Kits.

BATTERY BOX OPTIONS

PART#	DESCRIPTION	WT.
3507	No-Drill Mounting Kit	28
496	Frame Drill Mounting Kit	21
497	Battery Hold Down Kit (490, 491)	5



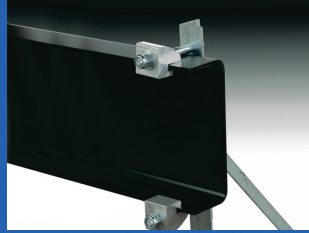
Call the Merritt Customer Service Team with questions & clarification. 800.525.0107



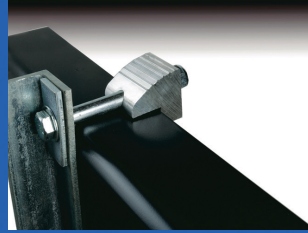
E-Z No-Drill Toolbox Mounting Kit



#620 for 18" Deep Boxes
#621 for 21" Deep Boxes



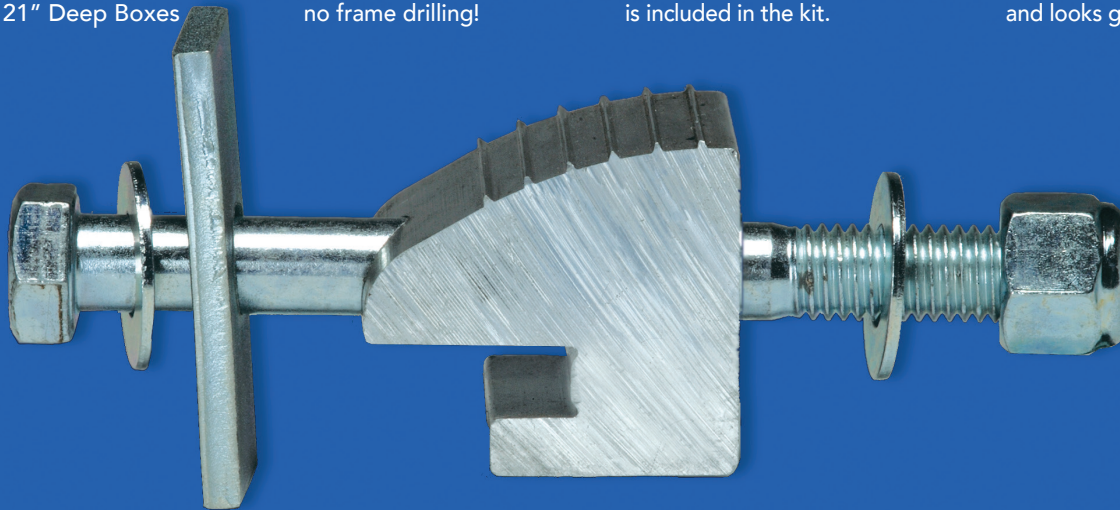
Clamps to flange,
no frame drilling!



All hardware for the installation
is included in the kit.



Secure, FAST to install
and looks good.



- New system requires no drilling of the frame to mount.
- Strong, durable, easy to install.
- A quick and simple solution to drilling the frame.
- Easy to move from truck to truck.
- Fits all Merritt side mount Toolboxes.
- All steel parts are Zinc plated for longer life cycle.
- Load rating equal to the Merritt box rating being mounted.
- For those who do not wish to drill their frame.
- Normal hand tools used for installation.
- Stocked in most Merritt warehouse locations.

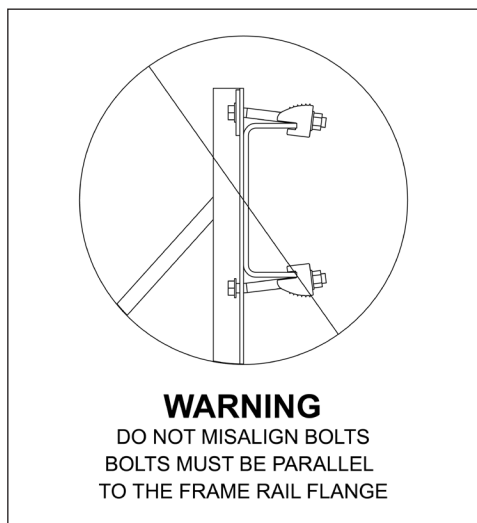
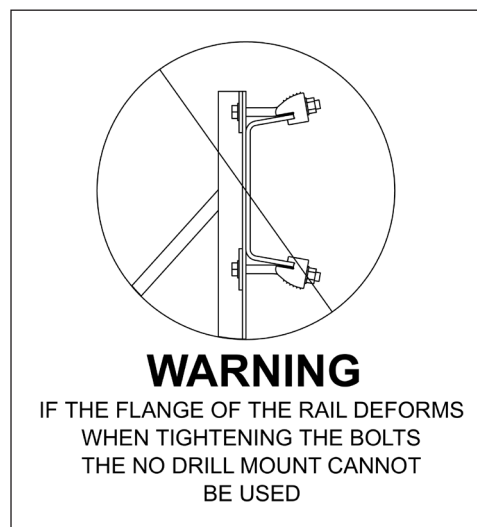
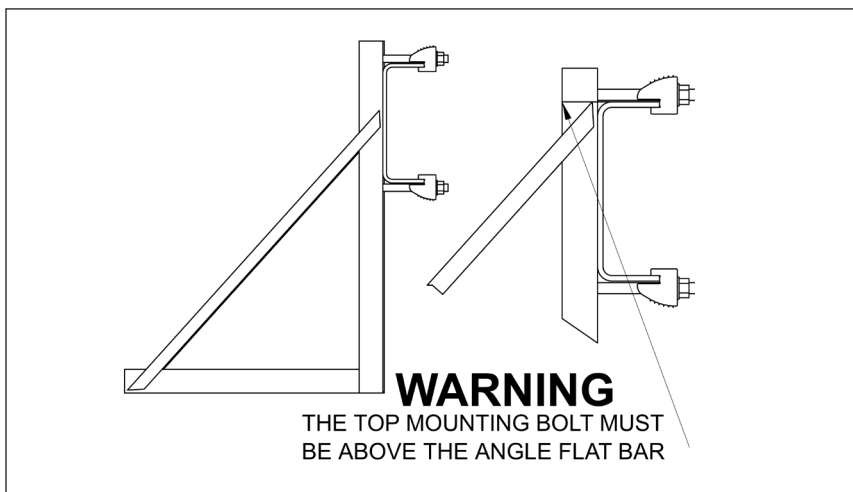
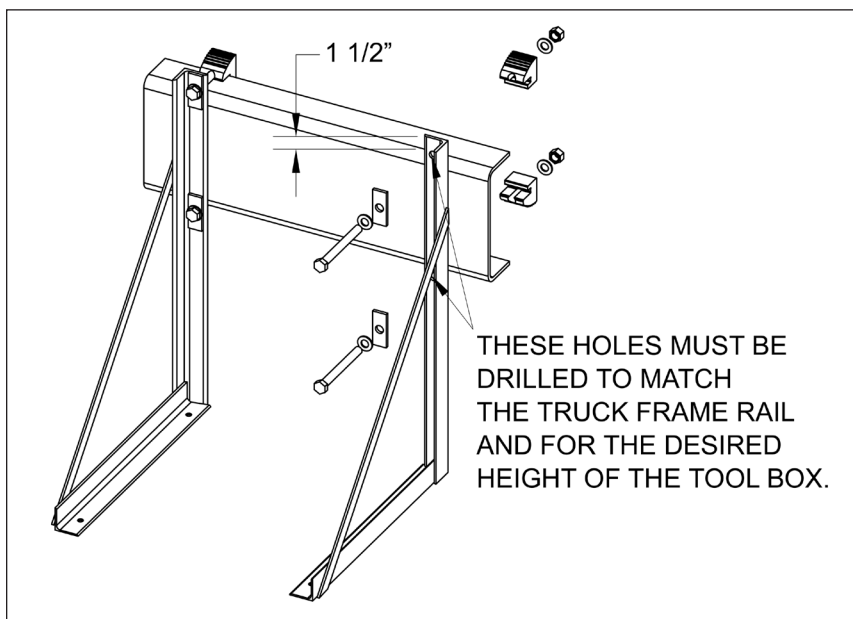
Models and/or Specifications Subject to Change Without Notice.



- Kit includes 1 right & 1 left "L" bracket and the E-Z Clamp
- Kit also includes all hardware to mount the brackets to the frame.
- Kit does not include the hardware to mount the box to the bracket.
- Must be installed to Merritt specifications, see mounting instructions

MOUNTING KITS

PART#	DESCRIPTION	WT.
620	Mounting Kit for 18" tool boxes	24
621	Mounting Kit for 24" tool boxes	31



* To be used on frames with a 7/16" flange thickness and smaller.



Call the Merritt Customer Service Team with questions & clarification. 800.525.0107



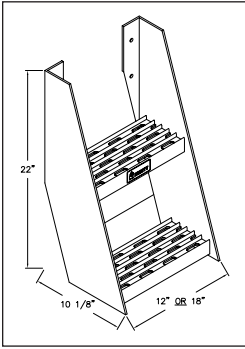
Step Accessories & Connection Box



- **Frame Step:** Strong extruded aluminum nonslip tread 12", 18" and 24" models.
- **Pete Style Steps:** Fits the Peterbilt® 379 tanks (33.5" and 35.5" widths are standard for the 23" and 26" diameter tanks.)
- **Fairing Box:** Designed to fit between side fairing panel & truck frame
- **Connection Box:** Polished finish or Diamond Plate Aluminum, with or without light holes.
- Cross frame mount or can be mounted in the Merritt Dyna-Deck top mount, for a "custom" look.
- The Connection Box fits directly into the Dyna-Deck cover, if desired.

Models and/or Specifications Subject to Change Without Notice.

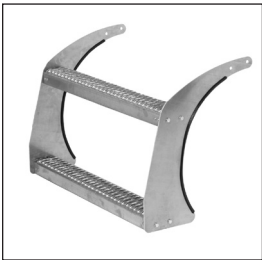




FRAME STEPS

PART#	DESCRIPTION	WT.
182	Frame Step - 12" Wide	9
362	Frame Step - 18" Wide	12
3000	Frame Step - 24" Wide	15

- Lower Step "foot stop - no shin bruises".
- Sturdy bolt design - light but strong.
- Bright aluminum throughout.



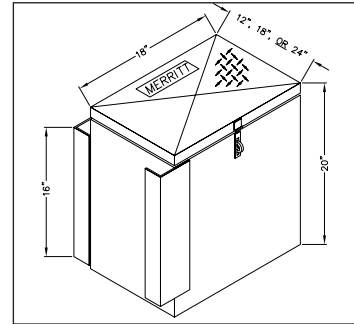
(For Pete Model 379)

PETERBILT® STYLE TANK STEP

PART#	DESCRIPTION & DIMENSION	WT.
3526	Tank Step - 23" Dia. x 33.5" Long	18
3527	Tank Step - 26" Dia. x 33.5" Long	18
3528	Tank Step - 23" Dia. x 35.5" Long	19
3520	Tank Step - 26" Dia. x 35.5" Long	19

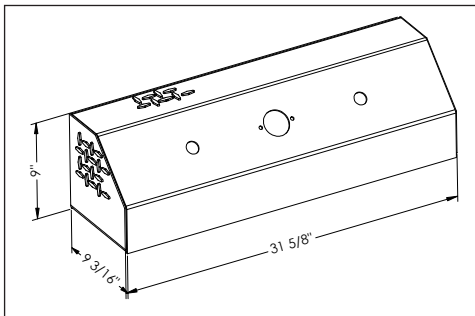
*For other widths, please provide Diameter and Step Width.

FAIRING BOX



PART#	DIM. HxWxL & DESCRIPTION	WT.
254	20"x18"x12"	32
255	20"x18"x18"	37
256	20"x18"x24"	43

- Designed to fit between side fairing panel & truck frame.
- Unique mounting kit allows for easy installation without removing side fairings.
- Extruded door frame with automotive door seal for a water resistant closure.



3533 - Diamond Plate with 2" Round Light Holes

CONNECTION BOX

PART#	DESCRIPTION	WT.
3529	Polished Aluminum w/ Air & Electric, No Light Holes	18
3530	Diamond Plate w/ Air & Electric, No Light Holes	18
3531	Polished with 5 (2") Round Light Holes	18
3532	Polished with 2 Oval Light Holes	18
3533	Diamond Plate w/ 5 (2") Round Light Holes	18
3534	Diamond Plate w/ 2 Oval Light Holes	18

Includes Mounting Hardware. Deck Cover Not Included.
Add to 432, 433, 434 or 435 Deck Covers.



Call the Merritt Customer Service Team with questions & clarification. 800.525.0107



Tire Chain Carriers



- **Tire Chain Carrier:** Frame mount lockable lid for security.
- Strong design to store up to 300 lbs of chains.
- 24" for open frames, 18" for frames with fairing packages.
- **Tire Chain Carrier:** Models with lid, without lid and with pull off lid available.
- You can purchase as singles or boxed in groups of 2, 3 or 4.
- Bulk Pricing available upon request.
- **E-Z Hook, Tire Chain Carrier:** Two models of hook. One for bolting to the frame, use (2) 1/2" grade 5 or better bolts. The other model is for bolting to the trailer cross member.

Models and/or Specifications Subject to Change Without Notice.

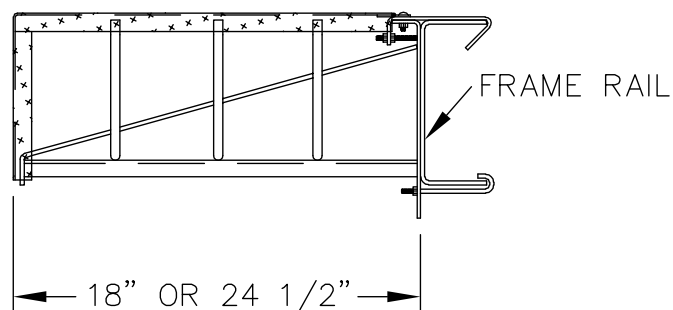


TIRE CHAIN CARRIER: FRAME MOUNT

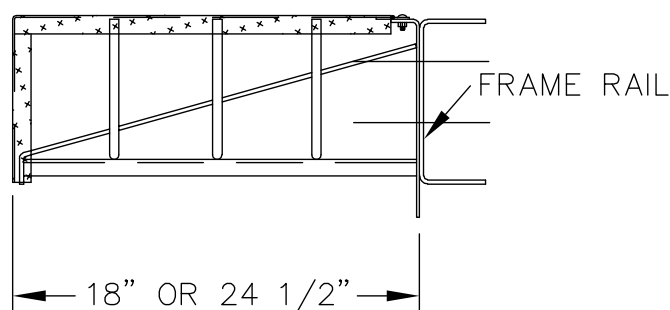
- Strong heavy duty design.
- Strong, light weight with bright finish for lasting good looks.

PART#	DESCRIPTION & DIMENSIONS	WT.
384-1	18" Chain Carrier w/Lid, 300 lb. capacity	22
233-1	24" Chain Carrier w/Lid, 300 lb. capacity	25
119	"No Drill" Mounting Kit (Fits 233 & 384)	4
385-1	18" Chain Carrier with 18" Removable Lid	22
234-1	24" Chain Carrier with 24" Removable Lid	22
3840	18" Chain Carrier No Lid	22
2330	24" Chain Carrier No Lid	22

NO DRILL MOUNT

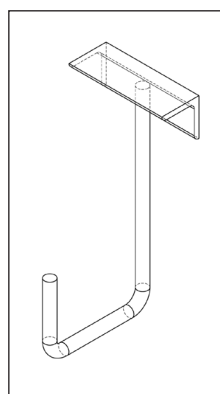
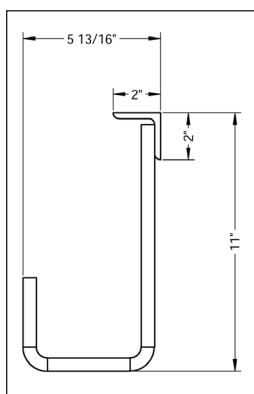


DRILLED FRAME MOUNT

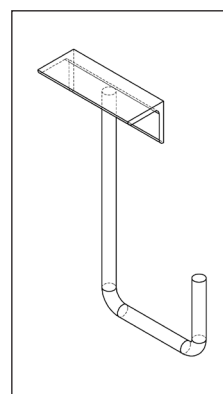


E-Z HOOK, TIRE CHAIN CARRIER

PART#	DESCRIPTION & DIMENSIONS	WT.
3548	90 Degree Hook	4
3548-2	90 Degree Hook, 2 pack	8
3548-3	90 Degree Hook, 3 pack	12
3548-4	90 Degree Hook, 4 pack	16
3549	Flat Hook	4
3549-2	Flat Hook, 2 pack	8
3549-3	Flat Hook, 3 pack	12
3549-4	Flat Hook, 4 pack	16



Part #3548 - Mounts to frame rail.



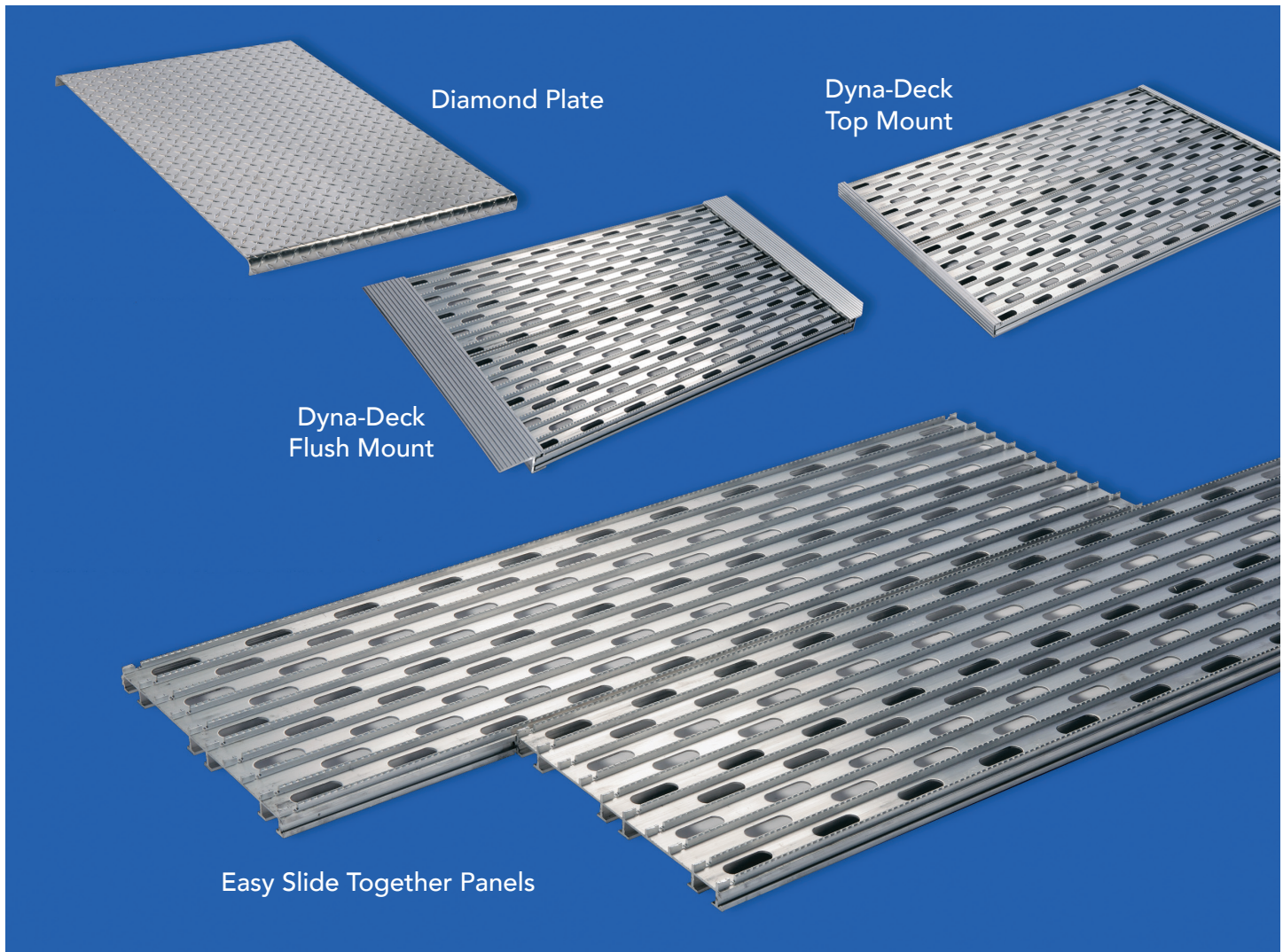
PART #3549 - Mounts to cross member of trailer.



Call the Merritt Customer Service Team with questions & clarification. 800.525.0107



Aluminum Deck Covers



- Dyna-Deck™, modular deck cover available in top and flush mount.
- Easy slide together planks.
- Expandable to fit your needs.
- Self draining.
- Non-Skid ribbed deck surface.
- Easy to install, no drilling.
- Diamond plate available with or without stiffeners.

Models and/or Specifications Subject to Change Without Notice.



DYNA DECK* TOP MOUNT

PART#	DIMENSION: Length x Width	WT.
432	18-1/2" L x 33-1/4" W	12
433	28" L x 33-1/4" W	17
434	37-1/2" L x 33-1/4" W	23
435	46-3/4" L x 33-1/4" W	28
436	56" L x 33-1/4" W	34
437	65-1/4" L x 33-1/4" W	40
438	74-1/2" L x 33-1/4" W	46

FLUSH MOUNT

PART#	DIMENSION: Length x Width	WT.
442	18-1/2" L x 30-1/4" W	12
443	28" L x 30-1/4" W	17
444	37-1/2" L x 30-1/4" W	23
445	46-3/4" L x 30-1/4" W	29
446	56" L x 30-1/4" W	35
447	65-1/4" L x 30-1/4" W	41
448	74-1/2" L x 30-1/4" W	47

MERRITT DYNA-DECK COVERS:

- Expandable
- Self Draining
- Mounting Kit Included
- Strong-Positive Mounting
- Low Installation Time
- Non-Skid
- Light Weight
- Attractive
- Variable Mounting Points
- Dyna Deck meets D.O.T. Regulations for walk area!

DIAMOND PLATE* WITH STIFFENERS

PART#	DIMENSION: Length x Width	WT.
156	24" L x 34-1/2" W	17
157	36" L x 34-1/2" W	20
166	48" L x 34-1/2" W	31
158	60" L x 34-1/2" W	35
159	72" L x 34-1/2" W	48
167	96" L x 33-1/4" W	59

WITHOUT STIFFENERS

PART#	DIMENSION: Length x Width	WT.
164	48" L x 34-1/2" W	28
165	96" L x 34-1/2" W	59

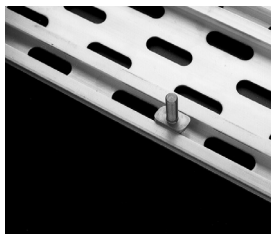
*Mounting Kit included with all Kit.

Must be installed to Merritt specifications, with a Merritt Mounting Kit.

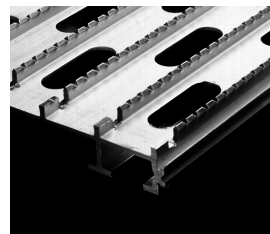
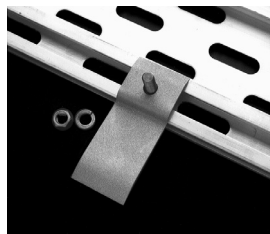
CAUTION: Diamond Plate Deck Covers are not to be used as walk areas. Injury may result.

NOTE: Diamond Plate Deck Covers may not meet D.O.T. regulations for walk areas. Check your local D.O.T. for clarification.

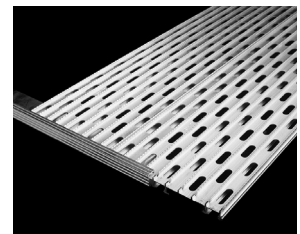
TOP MOUNT HARDWARE



"T-Bolt" Variable Anchor Points – Easy Assembly



No-Skid Ribs

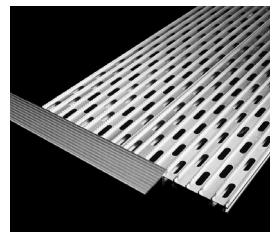
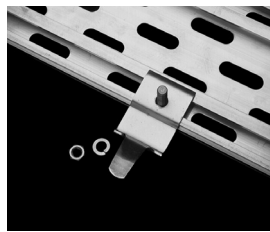


Slip Over Dress Cap

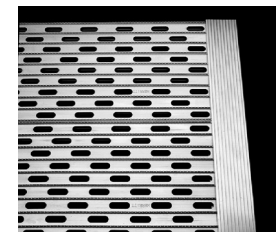
FLUSH MOUNT HARDWARE



Variable "T-Bolt" Mounting Kit

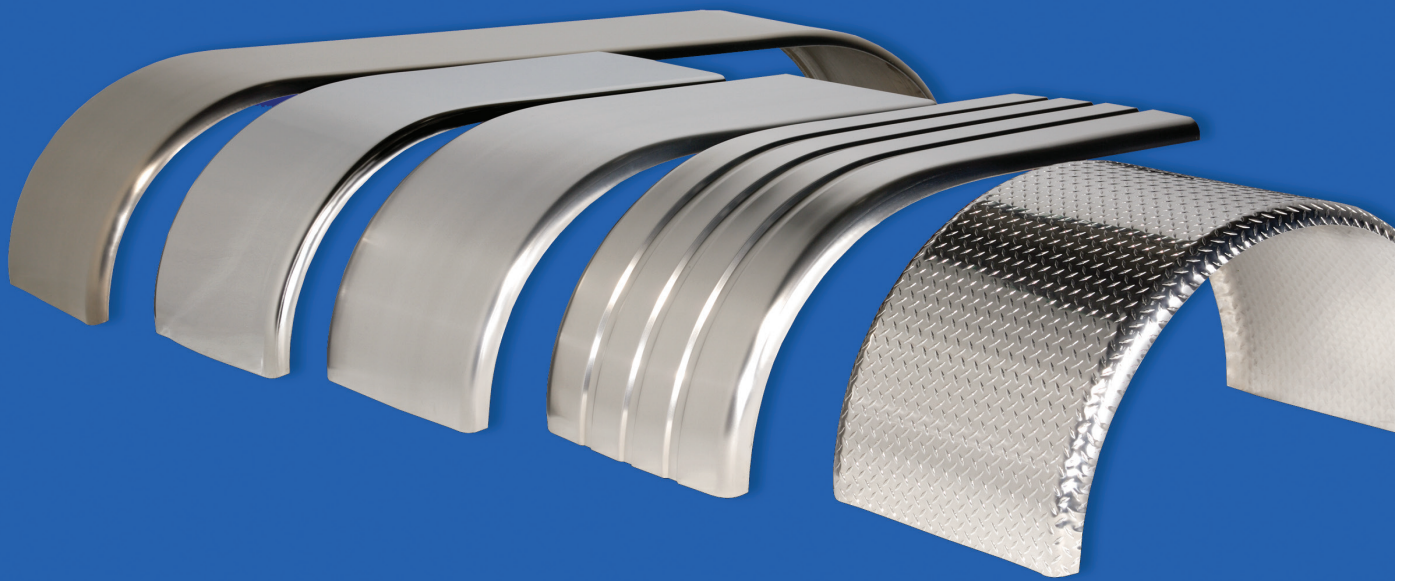


Slide On Mounting Cap



Ready To Mount

Aluminum & Stainless Fenders

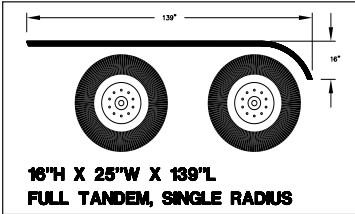


Rolled Fenders

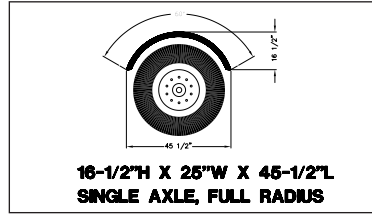
- Thirty-six models of fenders to fit most applications.
- Twelve different designs to cover your various needs.
- Stocked in most Merritt warehouse locations.
- Different styles and materials to choose from, allowing you to pick the “look” you want.
- Aluminum available in .090, .100DP or .125 thickness.
- 304 14ga stainless steel, #8 polish for strength and bright finish.
- Design a mounting style that will work for your truck.
- Custom lengths are available.
- Use the E-Z Mount Fender Bracket to install.

Models and/or Specifications Subject to Change Without Notice.

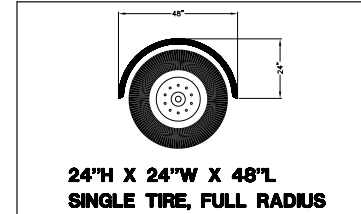
OPTIONS FOR FENDERS



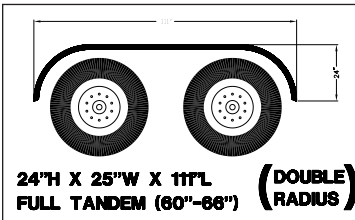
PART#	DESCRIPTION	WT.
5001	.090 Smooth Alum. w/Ribs	35.4
5011	.090 Smooth Alum.	34.0
5021	.100 Diamond Plate Alum.	42.9
5031	.125 Smooth Alum.	47.1
5541	14 Gauge "Bright" S.S.	67.4



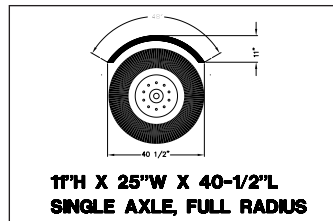
PART#	DESCRIPTION	WT.
5037	.090 Smooth Alum.	14.0



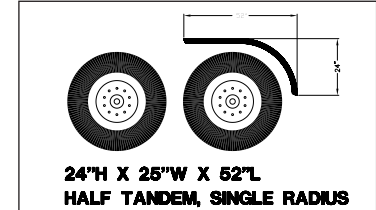
PART#	DESCRIPTION	WT.
5004	.090 Smooth Alum. w/Ribs	18.3
5014	.090 Smooth Alum.	17.6
5024	.100 Diamond Plate Alum.	22.0
5034	.125 Smooth Alum.	24.3
5544	14 Gauge "Bright" S.S.	34.8



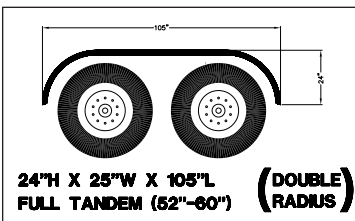
PART#	DESCRIPTION	WT.
5002	.090 Smooth Alum. w/Ribs	33.0
5012	.090 Smooth Alum.	31.9
5022	.100 Diamond Plate Alum.	38.3
5032	.125 Smooth Alum.	44.2
5542	14 Gauge "Bright" S.S.	64.1



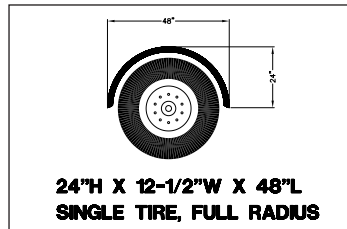
PART#	DESCRIPTION	WT.
5035	.090 Smooth Alum.	11.1
5036	.125 Smooth Alum.	13.0



PART#	DESCRIPTION	WT.
5000	.090 Smooth Alum. w/Ribs	15.6
5010	.090 Smooth Alum.	15.1
5020	.100 Diamond Plate Alum.	18.1
5030	.125 Smooth Alum.	21.0
5540	14 Gauge "Bright" S.S.	30.4



PART#	DESCRIPTION	WT.
5003	.090 Smooth Alum. w/Ribs	32.2
5013	.090 Smooth Alum.	30.9
5023	.100 Diamond Plate Alum.	38.9
5033	.125 Smooth Alum.	42.7
5543	14 Gauge "Bright" S.S.	61.5

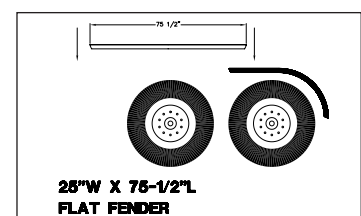


PART#	DESCRIPTION	WT.
5005	.090 Smooth Alum. w/Ribs	9.2

***Fenders sold as single units, order two for a set.**

Must be installed to Merritt specifications, with a Merritt Mounting Kit.

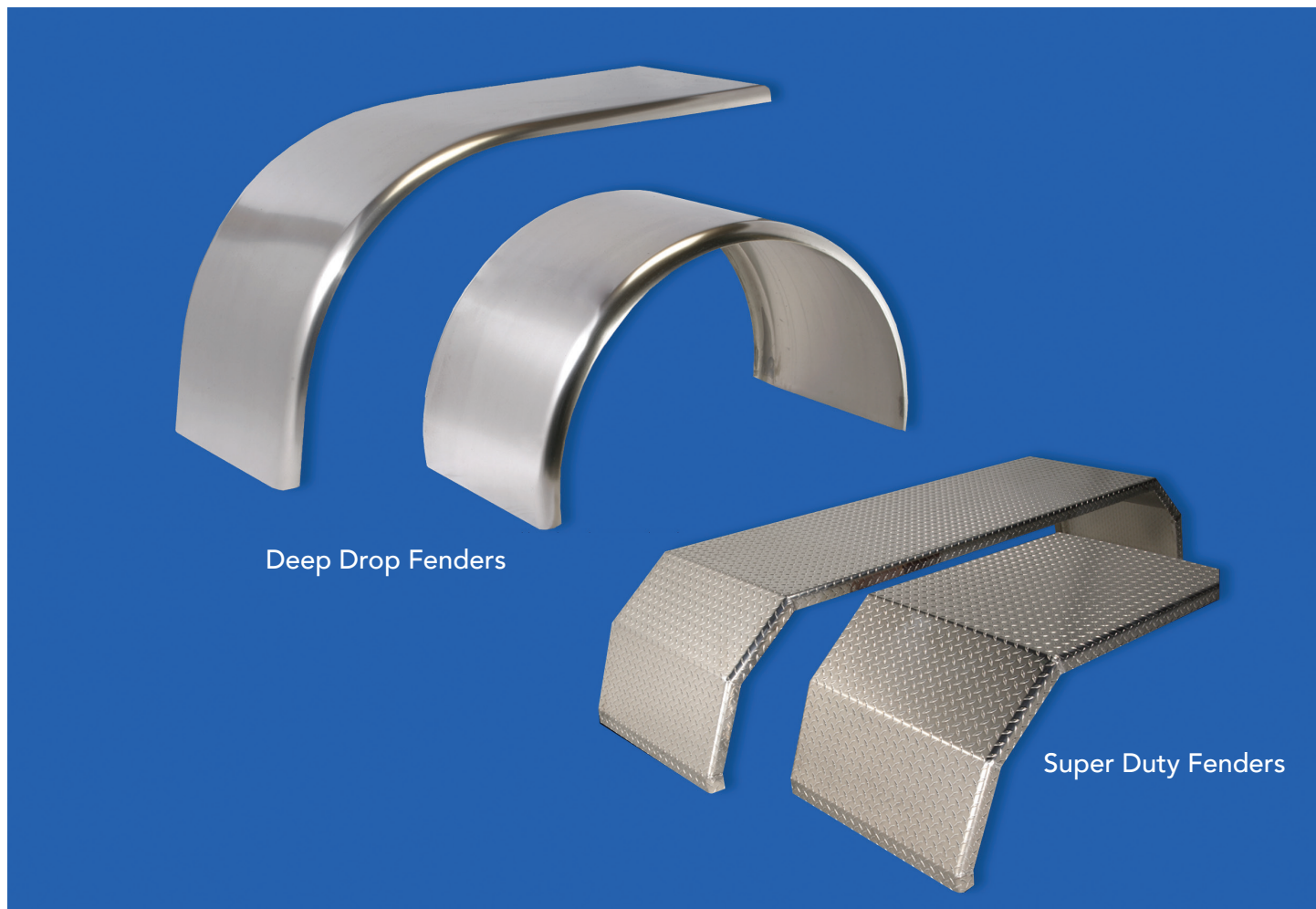
CAUTION: Fenders are not to be used as steps or load bearing surfaces.
NOTE: Modifications of the fenders are at the discretion, responsibility, and risk of the installer.



PART#	DESCRIPTION	WT.
5025	.090 Smooth Alum. w/Ribs	18
5026	.090 Smooth Alum.	17.4
5027	.100 Diamond Plate Alum.	20.9
5028	.125 Smooth Alum.	24.1
5549	14 Gauge "Bright" S.S.	34.9

Call the Merritt Customer Service Team with questions & clarification. 800.525.0107

Deep Drop, Super Duty Fenders

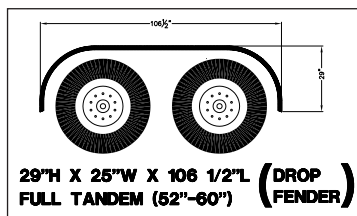


- **Deep Fenders – New style fenders:** Deep Drop Curved an addition 5" on the radius, which follows the tire radius. Deep Drop Straight with additional 5" added to the bottom of the radius - but continues straight down. Get that custom look at a standard price.
- Different styles and materials to choose from, allowing you to pick the "look" you want.
- Aluminum available in .090, .100DP or .125 thickness.
- 304 14ga stainless steel, #8 polish for strength and bright finish.
- Design a mounting style that will work for your truck.
- Super Duty models available for those rough applications.
- All Super Duty models are gusseted for added strength and long life.

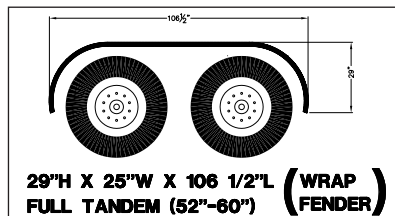
Models and/or Specifications Subject to Change Without Notice.



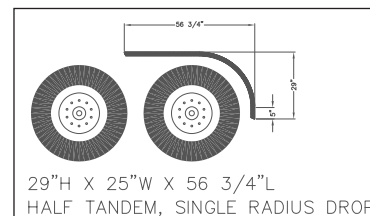
RADIUS WRAP AND DROP FENDERS



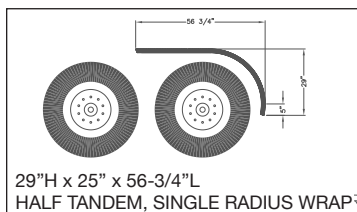
PART#	DESCRIPTION	WT.
5212	.090 Smooth Alum. w/Ribs	34.0
5222	.100 Diamond Plate Alum	42.9
5232	.125 Smooth Alum.	47.1



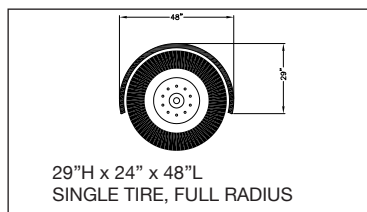
PART#	DESCRIPTION	WT.
5213	.090 Smooth Alum. w/Ribs	31.9
5223	.100 Diamond Plate Alum	38.3
5233	.125 Smooth Alum.	44.2
5547	14 Gauge "Bright" S.S.	64.1



PART#	DESCRIPTION	WT.
5210	.090 Smooth Alum. w/Ribs	30.9
5220	.100 Diamond Plate Alum	38.9
5230	.125 Smooth Alum.	42.7



PART#	DESCRIPTION	WT.
5211	.090 Smooth Alum. w/Ribs	15.1
5221	.100 Diamond Plate Alum	18.1
5231	.125 Smooth Alum.	21.0
5546	14 Gauge "Bright" S.S.	30.4



PART#	DESCRIPTION	WT.
5214	.090 Smooth Alum. w/Ribs	17.6
5224	.100 Diamond Plate Alum	22.0
5234	.125 Smooth Alum.	24.3
5548	14 Gauge "Bright" S.S.	34.8

***Fenders sold as single units, order two for a set.**

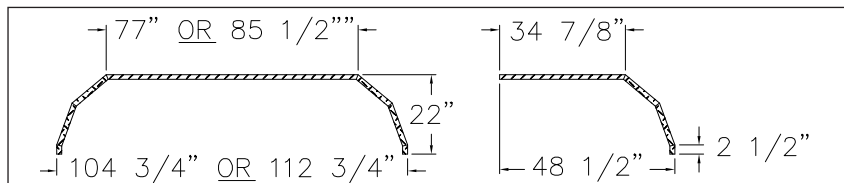
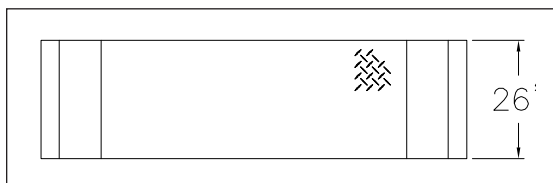
Must be installed to Merritt specifications, with a Merritt Mounting Kit.

CAUTION: Fenders are not to be used as steps or load bearing surfaces.
NOTE: Modifications of the fenders are at the discretion, responsibility, and risk of the installer.

SUPER DUTY FENDERS

PART#	DESCRIPTION	WT.
179	Full Fender, Tandem Axle 52" to 60"	54
180	Full Fender, Tandem Axle 60" to 66"	38.9
177	Half Fender	42.7

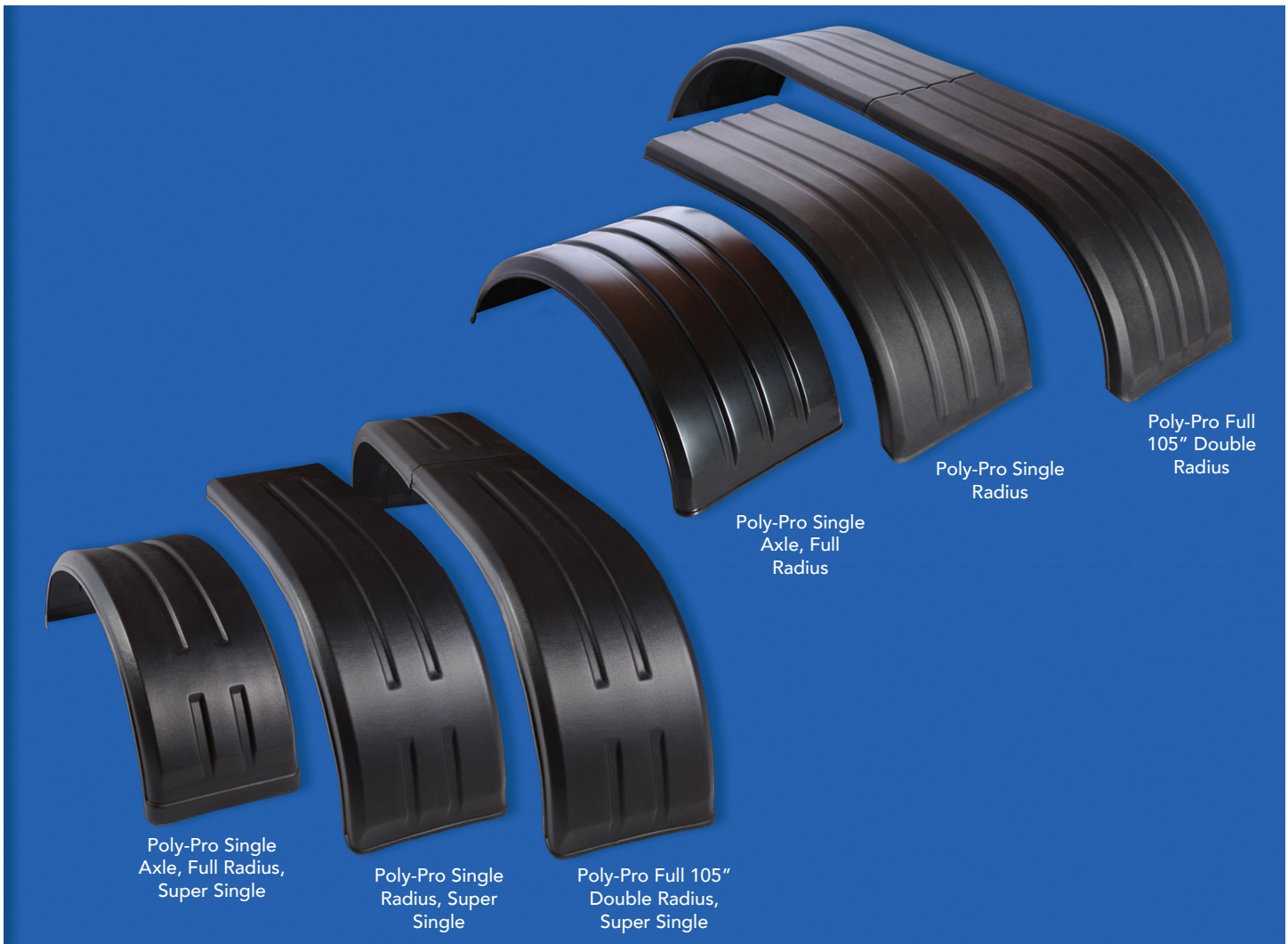
Fenders sold as single units, order two for a set.



Call the Merritt Customer Service Team with questions & clarification. 800.525.0107

Models and/or Specifications Subject to Change Without Notice.

Poly-Fenders



- Heavy duty, HDPE–High Density Polyethylene Flexible, with UV protection.
- Packaged as sets – two fenders per package.
- Full fender is bolted together on the middle.
- Currently six models available.
- Very flexible, low damage fender. Low cost – long life.
- Stocked in our warehouse group for fast and economical delivery.
- Use our market tested and easy to install “E-Z Mount” brackets to mount the Poly-Pro Fender.
- Standard Fender is 25” wide Super Single Fender is 18” wide.

Models and/or Specifications Subject to Change Without Notice.



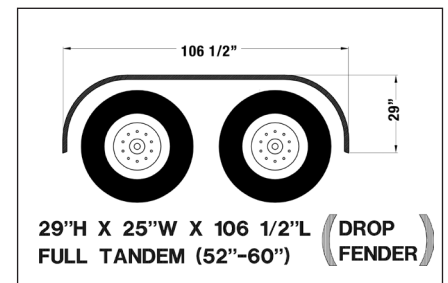
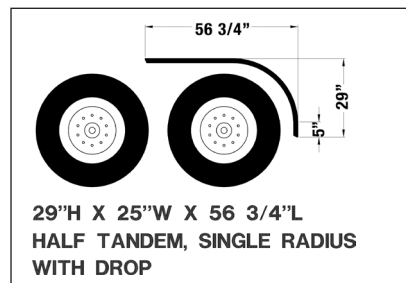
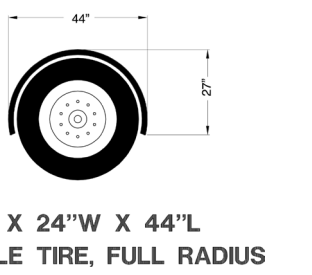
POLYETHYLENE FENDERS

PART#	DESCRIPTION	WT.
5344-2	Poly-Pro Single Axle, Full Radius, High Density Polyethylene Black Non-Paintable Set of 2 Ribbed	20
5340-2	Poly-Pro Half Tandem, Single Radius, High Density Polyethylene Black Non-Paintable Set of 2 Ribbed	30
5343-2	Poly-Pro Full Tandem, Double Radius, High Density Polyethylene Black Non-Paintable Set of 2 Ribbed. <i>Consists of: 4-Half Fenders, 1-Nut & Bolt Package</i>	45



SUPER SINGLE POLYETHYLENE FENDER

PART#	DESCRIPTION	WT.
5345-2	Poly-Pro Single Axle, 18" Wide Full Radius, High Density Polyethylene Black Non-Paintable Set of 2 Ribbed	20
5346-2	Poly-Pro Half Tandem, 18" Wide Single Radius, High Density Polyethylene Black Non-Paintable Set of 2 Ribbed	30
5347-2	Poly-Pro Full Tandem, 18" Wide Double Radius, High Density Polyethylene Black Non-Paintable Set of 2 Ribbed. <i>Consists of: 4-Half Fenders, 1-Nut & Bolt Package</i>	45



Call the Merritt Customer Service Team with questions & clarification. 800.525.0107



E-Z Mount Fender Bracket



- 6 Models to choose from, allowing you to adapt a bracket to your application.
- 3 Adjustable models, giving you greater flexibility.
- All E-Z Fender Mount brackets have the time tested single mounting bolt. Very Quick- Very Easy!
- 3 Straight models available with rubber spacers, which provide 1" clearance between the fender and bracket, allowing dirt and gravel to pass through ... makes cleaning easier.
- All hardware is supplied with each bracket for mounting.
- Fender to bracket mounting hardware is made from stainless steel.
- Mounting instructions included with each bracket for installation.
- Stocked in all Merritt warehouse locations.

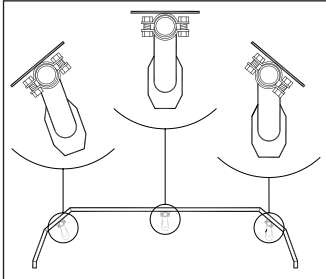
Models and/or Specifications Subject to Change Without Notice.



ADJUSTABLE FENDER BRACKETS

Installation Notes:

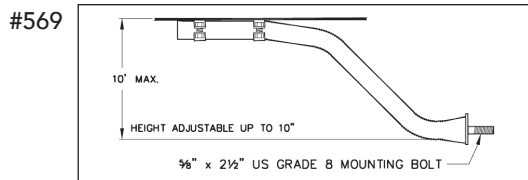
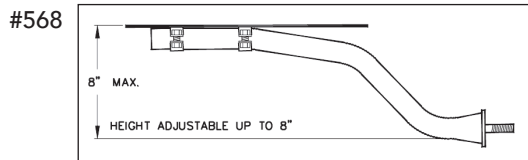
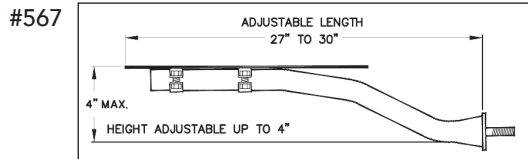
- Backing plate is designed to be used as a template to drill holes in the fender.
- When installing the 3/8" x 2-1/4" bolts, it is recommended that the bolts are not over-tightened, 10 inches/lbs. torque.
- It is necessary to bend TAB Lock-washers downward into the bolt to prevent unwinding.
- Torque 5/8" nuts to 150 ft/lbs.



All three E-Z Fender Brackets are adjustable in length 27" to 30".

Stainless steel cap screw mounting plate bolts are included.

PART#	DESCRIPTION	WT.
567	4" Model - Black	12
568	8" Model - Black	38.9
569	10" Model - Black	42.7



- If your E-Z Mount Bracket, mounted in the center and on the fifth wheel plate does not have full contact, the 1560 will allow a fix for this.
- Just mount with the "leg" below (see the drawing) the fifth wheel plate then mount the bracket through the plate making a 100% contact mount for the bracket.
- The 1560 package includes 2 plates, one for each side and instructions on how to use.

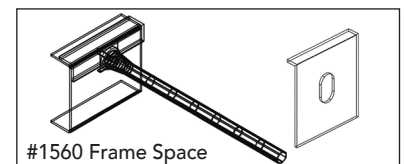
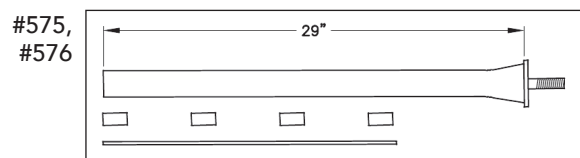
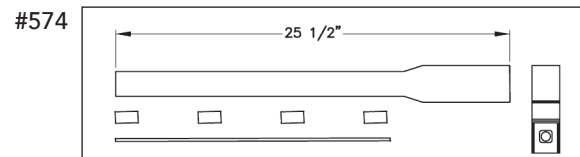
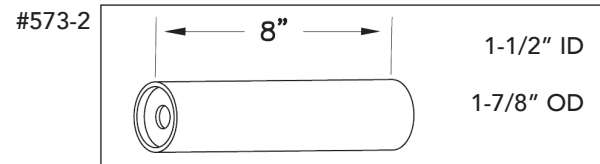
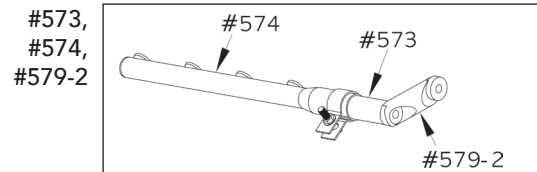
STRAIGHT FENDER BRACKETS

This is a universal bracket designed to mount outside any fender.

Features:

- Mounts solidly to frame with single grade 8 bolt.
- 574 mounts to the existing stub shaft for the 573 post, making those hard installation easier.
- Bracket mounts 1" off fender so rocks and gravel can pass through.

PART#	DESCRIPTION	WT.
573	Mounting Post	7
573-2	Mounting Post - Zinc Plated	5
574	Post Mount Bracket - Chrome	8
575	Straight Bracket - Black	12
576	Straight Bracket - Chrome	12
579-2	Post Mount Bracket	7
1560	Frame Space - Black	1



Call the Merritt Customer Service Team with questions & clarification. 800.525.0107



Lelox Heavy Duty Fender Brackets



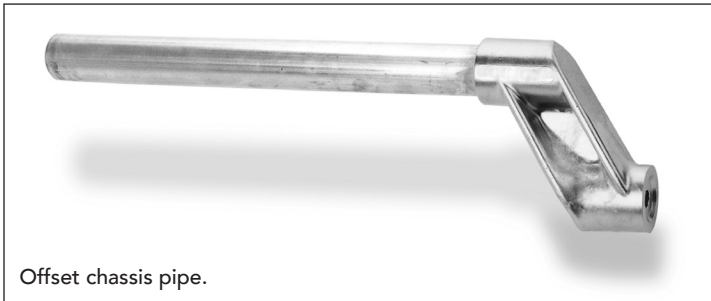
- Two models to choose from, allowing you to adapt a bracket to your application.
- Proven in one of the toughest environments in the world.
- Ideal for heavy duty trucks, thriving in harsh environments.
- Normal hand tools used for installation.
- Stocked in most Merritt warehouse locations.
- Each Heavy Duty Fender Mounting Kit will mount two quarter fenders or one single axle fender. Can be used to mount to a full fender using an E-Z Mount adjustable center bracket.
- Light, very strong, and highly durable.
- Heavy duty truck fender mounting kits include:
 - 2 off-set tube mounts (steel tube and cast aluminum boss).
 - 4 cast aluminum mounting brackets that securely fasten onto the tube and the fender.

Models and/or Specifications Subject to Change Without Notice.



OFFSET PIPE FENDER BRACKETS

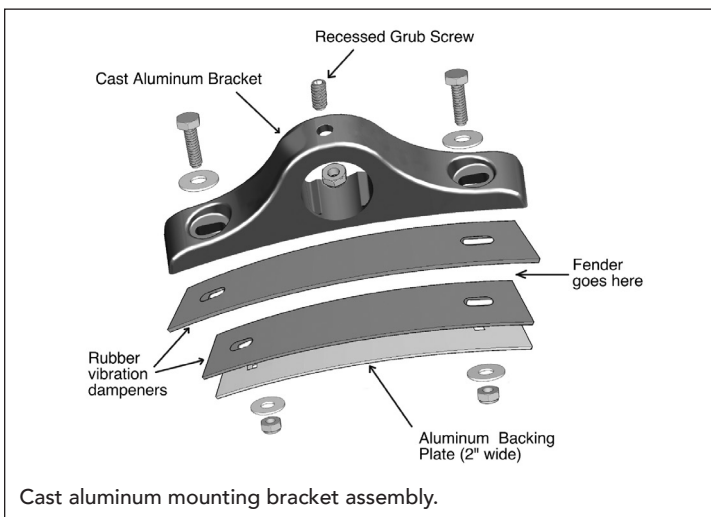
Offset Pipe Fender Bracket is designed to mount outside any fender.



Features:

Offset chassis pipe mounts solidly to frame with single grade 8 bolt.

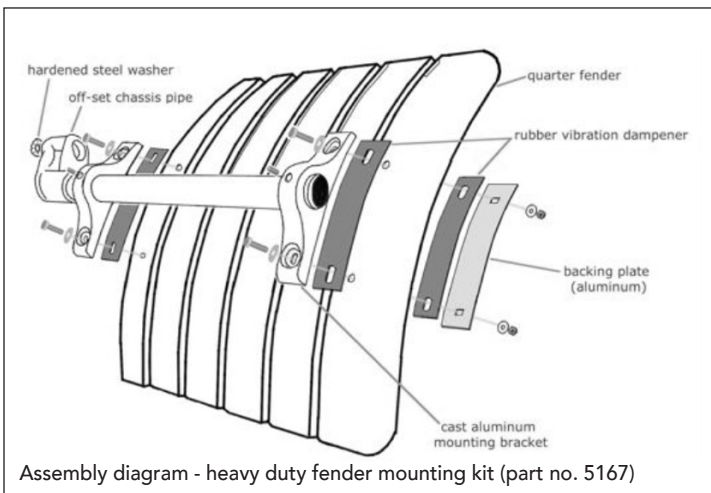
- It is necessary to bend TAB Lock-washers downward into the bolt to prevent unwinding.
- Torque 5/8 Nyloc nuts to 150 ft./lbs.



Features:

Cast Aluminum Brackets mount to the fender as shown, secure the Grub Screw to the pipe shaft, making those hard installations a breeze.

- Mounting bracket backing plate can be used as a template to drill holes in fender.
- When installing the 3/8" x 2-1/4" bolts, it is recommended that the bolts are not over tightened, 10 inch lbs. torque.
- Secure mounting bracket to chassis pipe/tube using "Grub Screw" and 3/8" conelock nut.



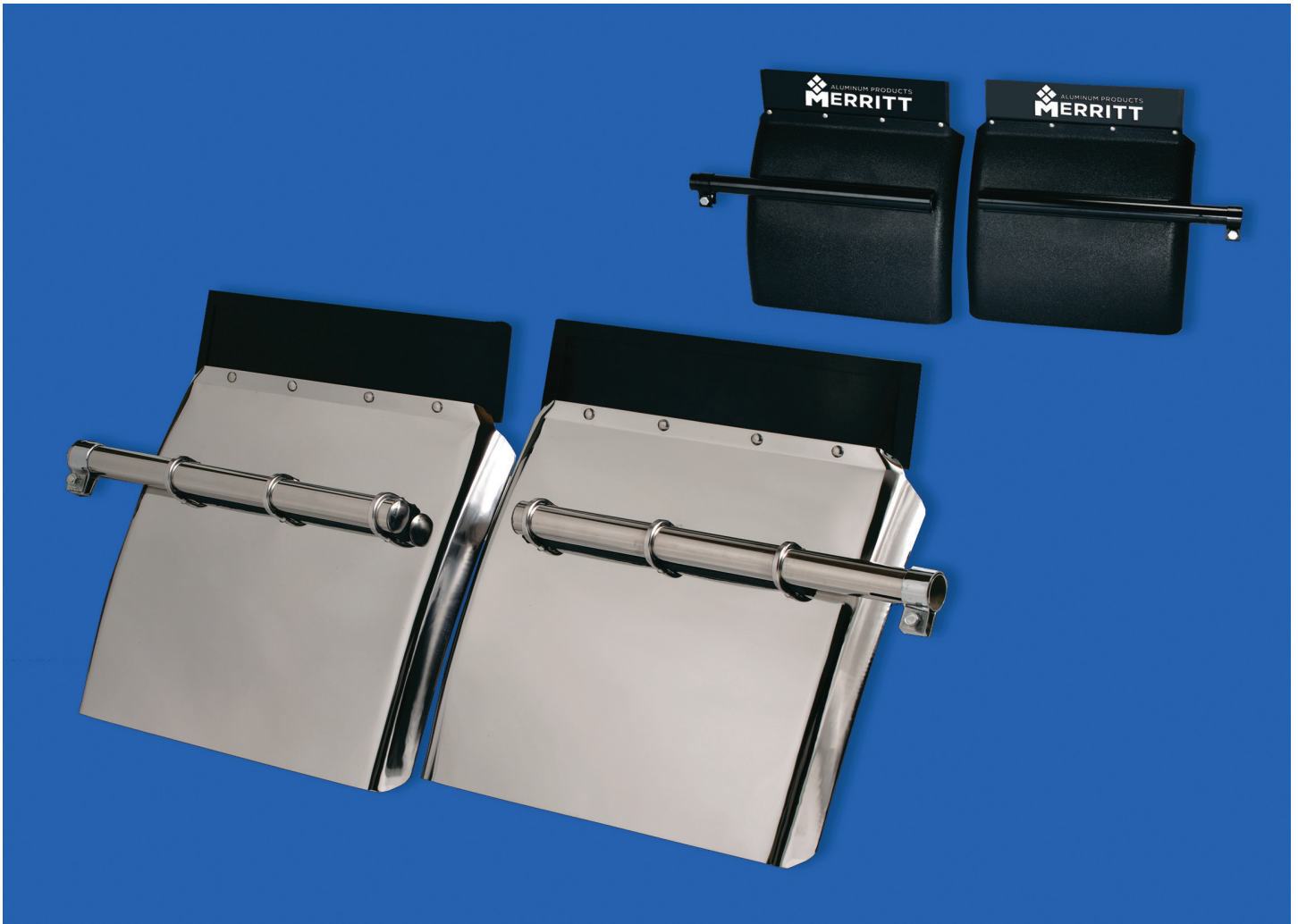
E-Z HD FENDER MOUNTING KITS

PART#	DESCRIPTION	WT.
5167-2	2 mounting tubes, 4 cast, curved fender brackets and mounting hardware	24
5168-2	2 mounting tubes, 4 cast, straight fender brackets and mounting hardware	24



Call the Merritt Customer Service Team with questions & clarification. 800.525.0107

Quarter Fenders: Stainless Steel & Poly



- Two stainless steel alloys to choose from:
#304 – a longer lasting alloy or #430 – a more affordable alloy.
- Both alloys are polished to a high degree of luster for a bright and good looking addition to your truck.
- Three sizes of fenders available in stainless steel: 24", 27" or 29". You can select the length you need.
- Quarter fender kits include:
2 quarter fenders, 2 top flaps, 2 mounting clamps, nut and bolt package.
- The black poly fender is made of thick, tough polymer for a long life.
- Quarter Fenders are stocked in our 13 warehouse locations, for quick delivery to you.
- Service and support that you expect from the Merritt family of products.

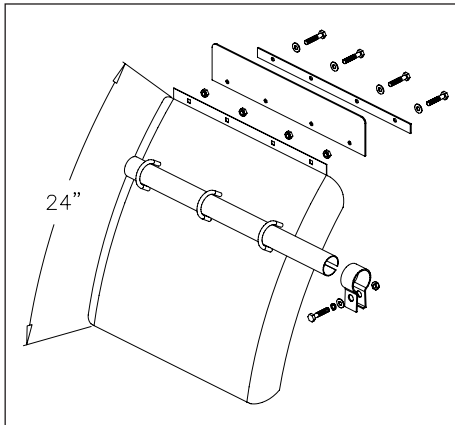
Models and/or Specifications Subject to Change Without Notice.





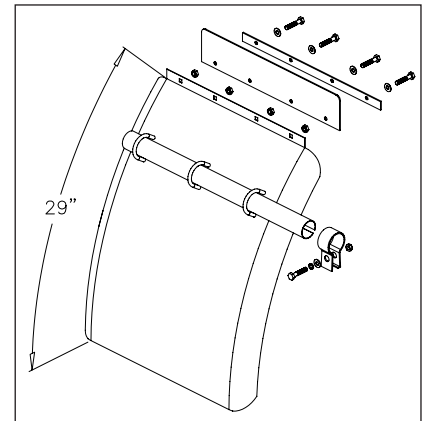
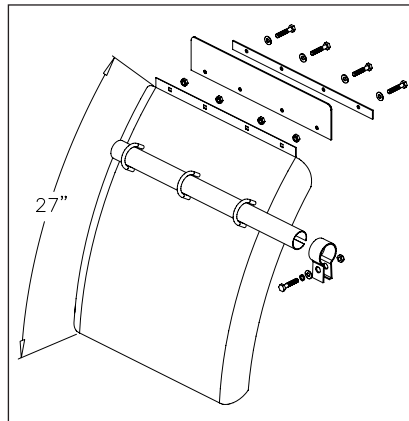
430 Stainless steel – ROUND TUBE MOUNT

PART#	DIM: Length x Width	WT.
5070-2	24" L x 24" W	33
5072-2	24" L X 27" W	34
5074-2	24" L X 29" W	35



304 Stainless steel – ROUND TUBE MOUNT

PART#	DIM: Length x Width	WT.
5080-2	24" L x 24" W	33
5082-2	24" L X 27" W	34
5084-2	24" L X 29" W	35



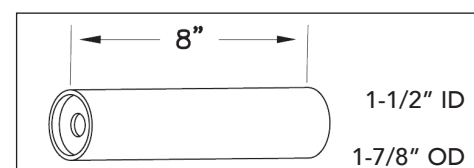
BLACK POLY-ROUND TUBE MOUNT

PART#	DIM: Length x Width	WT.
5060-2	24" L x 24" W	34



MOUNTING POST – ZINC PLATED

PART#	DESCRIPTION	WT.
573-2	Packed 2 pair	5



Call the Merritt Customer Service Team with questions & clarification. 800.525.0107



Assorted Hose Racks



3513 Hose Rack
(Pictured w/optional
3511 Base Tray)



3683 Short Hose Rack



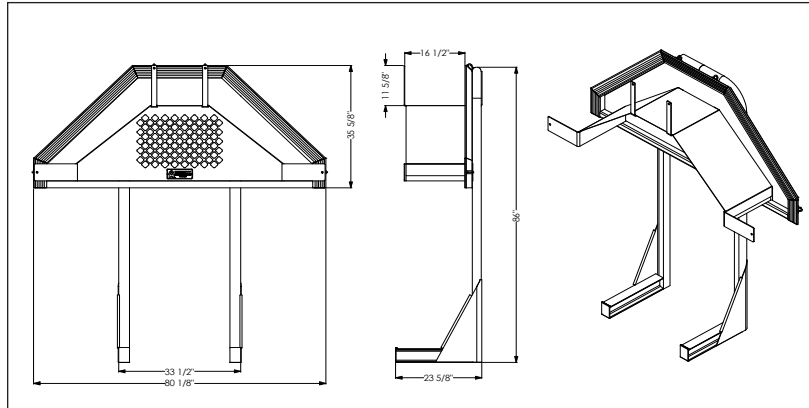
- Constructed of light, but strong Aluminum, for long life, great looks and weight savings.
- Premium alloys used throughout, to make sure you receive the great Merritt product you expect.
- I-Beam foot for a robust product.
- Stocked in Merritt warehouses, for quick delivery. Contact your local dealer for order placement.
- Load tested to 1000lbs static load.
- Options available to make the Rack even more productive.
- Heavy-duty mounting kit available. Easy to install, yet durable and strong. (Must be installed to manufacturer directions).

Models and/or Specifications Subject to Change Without Notice.

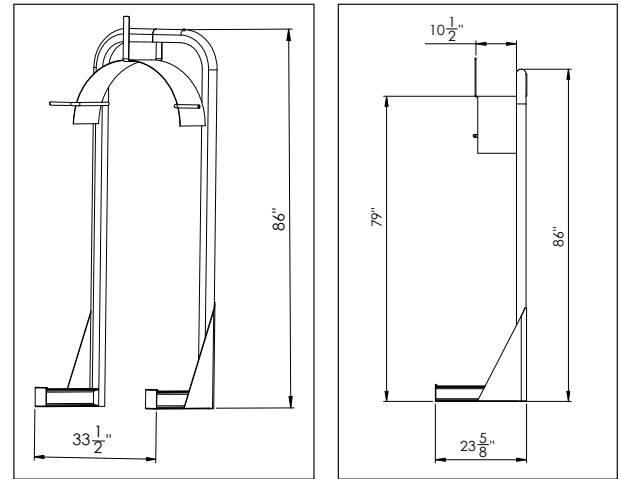


HOSE RACK

PART#	DESCRIPTION & DIM: HxDxL	WT.
3513	Hose Rack: 86" x 23-3/8" x 33-1/2"	46
3683	Hose Rack: 46-3/4" x 23-3/8" x 33-1/2"	36
OPTION#	HEAVY DUTY DESCRIPTION & DIM: HxDxL	WT.
6313	Hose Rack: 86" x 23-1/2" x 80-1/2"	120



Custom Heights Available



HOSE RACK OPTIONS

PART#	DESCRIPTION & DIM: HxDxL	WT.
3511	Base Tray: 2-3/4" x 20-1/2" x 30-1/4"	10
3512	Fitting Box: 13-1/2" x 8-1/2" x 33-1/2" (Specify height above frame)	20



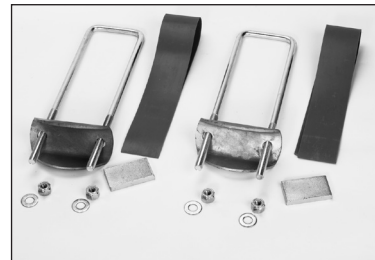
#3512 Fitting Box



#3511 Base Tray

HOSE RACK MOUNTING KIT

PART#	DESCRIPTION & DIM: HxDxL	WT.
3502	Mounting Kit	23



#3502 Mounting Kit



Call the Merritt Customer Service Team with questions & clarification. 800.525.0107



Hydraulic Tank

7030



7070



- Space saving design mounts between the feet of a Merritt Cab Rack.
- Constructed of durable lightweight aluminum.
- Long lasting great look.
- Fluid level sight gauge with thermometer and metal guard for protection.
- Three Standard Models 30,55 and 70 gallon.
- Every tank is pressure tested for leaks
- Two 2" ports in the bottom.
- 3/4" magnetic drain plug.
- Raised filler neck with O-ring sealed anodized cap for a cleaner system.
- 3/4" vent.
- 3/16" aluminum for strength.

Models and/or Specifications Subject to Change Without Notice.



CONSTRUCTED OF DURABLE LIGHTWEIGHT ALUMINUM

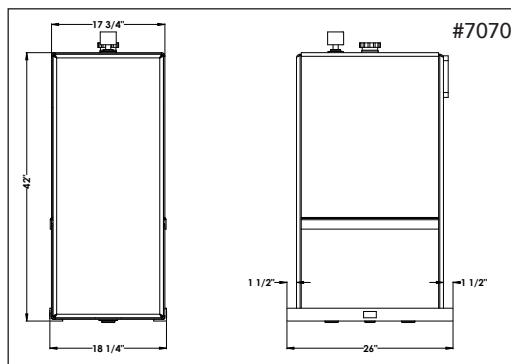
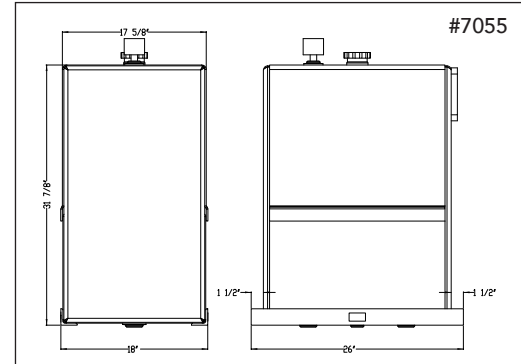
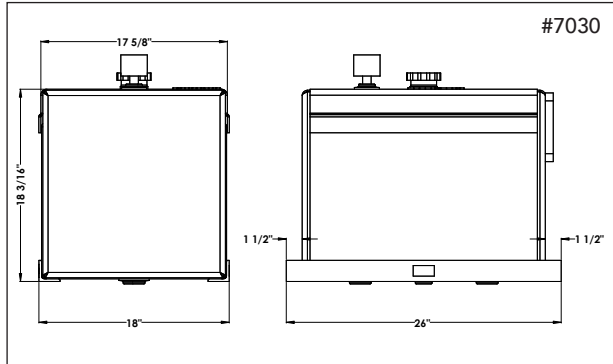
HYDRAULIC TANKS

PART#	DESCRIPTION	WT.
7030	Hydraulic Tank - 30-gallon Capacity	93
7055	Hydraulic Tank - 55-gallon Capacity	118
7070	Hydraulic Tank - 70-gallon Capacity	138

Complete Kits include: Reservoir Assembly, Breather Cap, Spring Mounting Kit, and Installation Plate for Cab Rack between the feet installation.

MOUNTING HARDWARE INCLUDED:

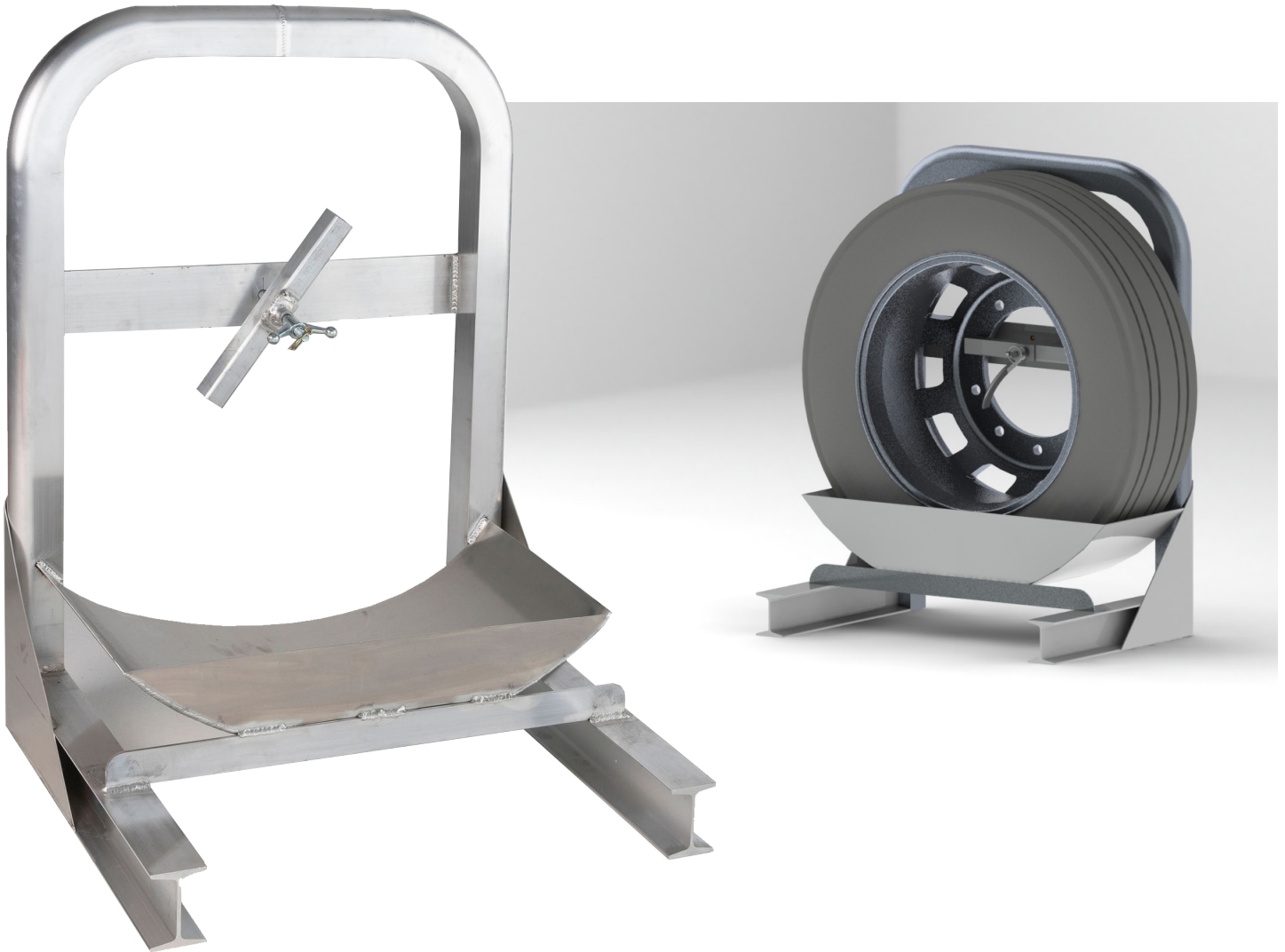
NUT, 1/2" NF LOCK NYLON INSERT
BOLT 1/2" x 3-1/2"
BUMPER, 2" ODX1/2"IDX1/2TK NEO
SPRING, COMP .576 ID X 1.665 LG BLK ZN
WASHER, 1/2 FLAT USS ZINC
TRAY, BASE MOUNT



Call the Merritt Customer Service Team with questions & clarification. 800.525.0107



E-Z Spare Tire Carrier



- Strong, heavy duty design. Built from our time proven D-Tube and Cab Rack foot I-Beam. Both 24.5 and 22.5 tires will fit.
- Bright, smooth finish Aluminum throughout.
- Strong, light weight, with bright finish for lasting good looks.

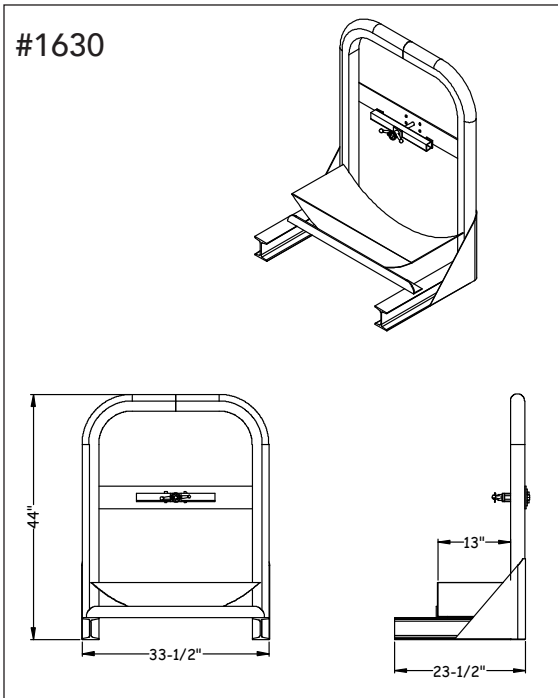
Models and/or Specifications Subject to Change Without Notice.



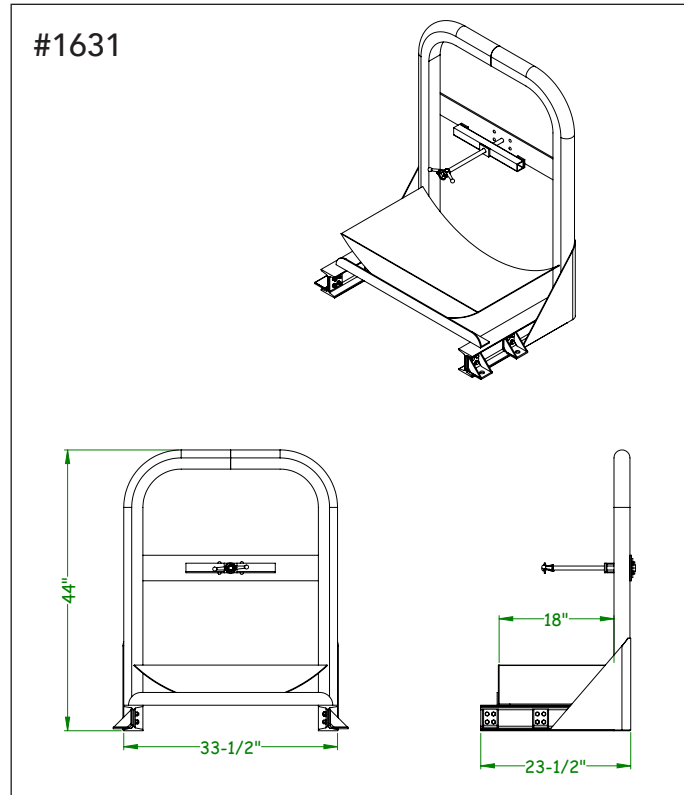
E-Z SPARE TIRE CARRIER

PART#	DESCRIPTION	SIZE	WT.
1630	Spare Tire Carrier - 22.5 and 24.5	13" Tray	43
1631	Spare Tire Carrier - Super Single	18" Tray	55

#1630



#1631



MOUNTING KITS

PART#	DESCRIPTION	WT.
3502	Mounting Kit for 1630	23
3539	Mounting Kit for 1630	17



#3502 Mounting Kit



#3539 Mounting Kit



Call the Merritt Customer Service Team with questions & clarification. 800.525.0107



Custom Color Coatings

Merritt Aluminum Products uses Prismatic Powders. They offer the world's largest color selection of custom powder coatings with over 6500 colors and finishes to choose from.

- Customize to your fleet color
- Contact your Merritt Sales Rep for custom options
- 3-year powder coat warranty from date of possession





1011 14th Street | Fort Lupton, CO 80621
alum.products@merrittproducts.com
800-525-0107 | MerrittProducts.com